

S
CLASS





EXPERIENCE THE
EXCEPTIONAL

Your yacht is an extension of yourself. A statement of your lifestyle. She needs to deliver unforgettable experiences for you, your family and friends. Every Princess yacht is designed with our forward-thinking mentality and crafted with meticulous attention to detail. So whether you're dashing across the water or moored in your favourite bay, you will recognise the difference our design and details make, inside and out.

Experience the exceptional.



CRAFTED IN PLYMOUTH

Perched on the edge of the English Channel lies the city of Plymouth, where we established our home in 1965. Today Princess shipyards cover an area of over 1.1 million square feet, an area rich in British maritime heritage. In fact, South Yard, where our X Class Super Flybridge yachts are constructed, is a former naval yard dating back to the 17th century. From the outset, our goal has been to meticulously sculpt our yachts around our owners' enjoyment of them. Such dedication and attention to detail resonates deeply with our Plymouth craftspeople.

Over 3,000 people, each possessing a mastery of their skill, fastidiously realise this vision in our shipyards. Through a culture of innovation, our yachts are not only some of the most technically-advanced in the world but also the most beautifully realised.



1965

Our story has humble beginnings. In 1965 David King and two friends fitted out their first boat in an old fertiliser store in Plymouth, England. They named her 'Project 31'. Originally destined for charter, the first Project 31 was purchased by a keen boater and two more were built shortly afterwards, marking the beginning of what is today one of the world's leading shipyards. In fact over 130 Project 31 yachts were produced and sold between 1966 and 1969.



TODAY

Over 17,000 boats later, the S62 and S66 are the very latest additions to our S Class range. Delivering captivating performance and luxurious beauty, they are proud symbols of our experience and expertise – at the zenith of luxury yacht manufacturing. Finished to high specifications throughout, the new S62 and S66 are everything we've learned, distilled into the finest on water experience.





S CLASS

Cool and captivating. Balanced. Distinctively luxurious and spaciousness throughout, the extensive cockpits, garages and aft sunpads entice you to enjoy watersports and the great open air. A sports experience with generous interior accommodation for entertaining, our S Class craft are a haven of relaxation, and exhilaration is on tap, for when you need it.





S 80



The all-new flagship of the S Class range, the Princess S80 features a sleek sporting design with high powered performance and premium craftsmanship. Inspired by urban living, the S80 provides a sense of contemporary elegance, with a single level main deck, flowing furniture and sophisticated detailed interiors. She delivers an excellent driving experience, with twin high performance V12 engines that smoothly transition from displacement to planning within seconds. The sportbridge is perfect for entertaining, with an incredibly large U-shaped seating area, port and starboard companion seating, servery with sink, fridge and barbeque, plus the option of a dining table and triple seats to the helm station.







The cockpit offers unique versatility with configurable seating including adjustable twin upholstered L-shaped seats which can manually slide in-board, outboard and forward facing alongside twin coffee tables and twin aft sun pads which flank the teak-capped stairs leading to the spacious electro-hydraulic bathing platform.

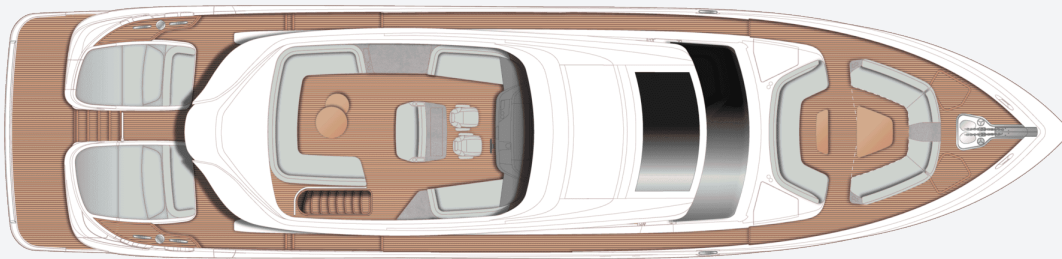
Below deck, eight guests enjoy four beautifully appointed en-suite cabins, all bathed in natural light from elegant hull glazing, with a further twin cabin aft for occasional guests or crew. A dedicated staircase leads from the main deck to the full-beam owner's stateroom amidships, via a private lobby area in the lower companion way.



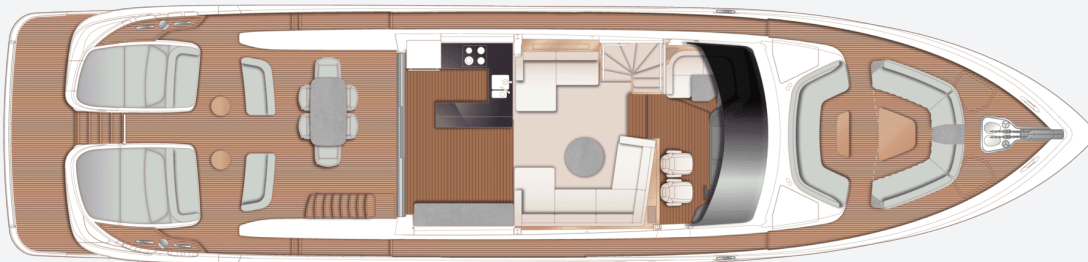




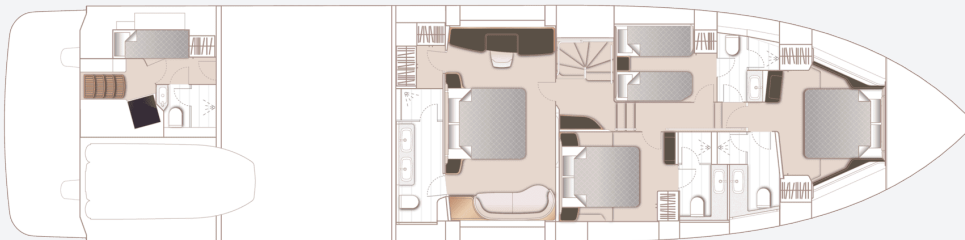
S80
SPECIFICATION



S80 Sportbridge



S80 Main Deck



S80 Lower Deck

PRINCIPAL DIMENSIONS

Length overall (incl. pulpit)	83ft 5in / 25.43m
Length overall (excl. pulpit)	82ft 4in / 25.10m
Beam	19ft 11in / 6.07m
Draft	5ft 10in / 1.78m
Displacement approx. (half load)	66,569kg (146,760lbs) *
Fuel capacity	1,430 gal / 1,717 US gal / 7,000 l
Water capacity (excl. calorifier)	326 gal / 391 US gal / 1,480 l

ENGINES

TWIN MAN V12-2000 (2 x 2,000mhp)	Maximum speed range - 29-31 knots [†]
---	--

FULL SPECIFICATION

DECK FITTINGS

- Teak-laid transom platform, transom steps, cockpit deck, stairway to sportbridge, side decks, foredeck & sportbridge areas
- Reversible hydraulic anchor winches with foredeck, main helm and sportbridge controls
- Stemhead roller with automatic anchor launch and retrieve
- Twin anchor system incorporating:
 - Primary anchor - 80kg galvanised Lewmar Claw anchor, with stainless steel Lewmar swivel and 100m of 14mm galvanised anchor chain
 - Secondary anchor - 50kg galvanised Lewmar Claw anchor, with stainless steel Lewmar swivel and 70m of 14mm galvanised anchor chain
- Deck chain stoppers
- Twin electric stern line mooring winches
- Deck hatch access to chain locker, rope locker
- Freshwater deck/anchor wash (with both fore and aft deck outlets)
- Stainless steel foredeck fairleads (1 pair)
- Stainless steel stern fairleads (2 pairs)
- Stainless steel bow cleats (1 pair, port & starboard)
- Stainless steel spring cleats (2 pairs, port & starboard)
- Stainless steel stern cleats (2 pairs, port & starboard)
- Stainless steel transom cleats (1 pair)
- Stainless steel handrails to foredeck and main deck side decks
- PVC rubbing band with stainless-steel insert
- LED deck level lighting
- Full set of IMCO navigation lights
- Twin beam searchlight with remote controls
- Stern docking lights
- Twin electric horns
- Fuel and water fillers
- Loudhailer
- Ensign socket and staff
- Holding tank dockside discharge connection
- Stainless-steel guard rails to foredecks
- Foredeck escape hatch
- Twin coach roof lockers for storage of fenders and ropes
- Foredeck forward-facing U-shaped seating area

with optional coffee table

- Foredeck aft-facing U-shaped seating area with central storage locker with (grey porcelain top) and standard coffee table
- Williams tender launch system includes electric winch, rollers and non-slip pads and Williams Sportsjet 435 tender strapping
- Williams Sportsjet 435 tender strapping for use in tender garage

COCKPIT AND BATHING PLATFORM

- Self-draining teak laid deck
- Princess logo in bathing platform teak
- Electro-hydraulic teak laid raise/lower bathing platform (550kg SWL)
- Retractable bathing ladder (manual) in side of bathing platform
- Hot & cold transom shower
- Garage fitout to include electro-hydraulic door and electric winch for tender up to 4.35m
- Space below garage for optional Glendinning

equipment

- Single transom gate leading to bathing platform
- Watertight top hinged door giving access from bathing platform into crew area/engine room
- Remote control telescopic passerelle with automatic folding handrails (1.2m overhang)
- Twin aft sun pads with cupholders and backrests/headrests
- Twin forward facing seats
- Twin upholstered aft facing bench seats which can be manually re-positioned if required
- Life raft stowage in port aft sun pad
- Engine room to cockpit escape hatch
- Integral stairway to sportbridge with teak step treads
- Teak extendable dining table (extends from 6 to 8) with 8 chairs
- Starboard side servery with sink and bin
- Starboard locker containing remote fuel shut-off, manual bilge pump with valve chest and manual controls for automatic fire extinguishers
- LED overhead and deck level lighting
- Stainless-steel oval handrails
- Canvas tonneau cover (Note: shortened to length of stowed cushion position to allow garage and crew access)

- Illuminated crown logo on transom
- 220v/240v shore support inlets (2)

SPORTBRIDGE

- Dual station instrument and controls console (see lower helm position)
- Helm position
- Twin upholstered seats with manual fore/aft adjustment for helmsman on moulded seat base
- Drinks holders (2)
- USB charging points (2) (1x USB-A and 1x USB-C)
- Port and starboard companion seating
- Stainless steel capped fly screen
- Teak-laid deck
- Aft U-shaped seating area with coffee table
- Clear view hatch to aft cockpit
- Access stairway to aft cockpit
- Aft-facing moveable upholstered dining-height seat (can be locked in place when positioned behind helm seats), with top-hinge storage unit and countertop aft of helm/navigator seat
- Portside servery with sink/tap, BBQ, and drawer fridge and bin. Worktop is grey porcelain.
- LED deck level lighting
- Radar mast

- Twin matching whip aerials for VHF R/T radio
- Covers to exterior furniture
- Optional dining table
- Optional GRP hardtop with dimmable LED lighting

HELM POSITION

- Lower helm with fixed height captain's leather upholstered seat with manual fore and aft adjustment.
- Fixed navigator seat
- Helm seats Incorporates manual fold down foot rest (Optional fixed third helm seat)
- U-shaped companion seating to port with dining-height table
- Instrument console with display incorporating engine instruments, optional CCTV, fuel gauges, alarms and rudder position indicator
- Dual station instrument and controls console at lower helm position/sportbridge
 - power-assisted electro-hydraulic steering (Seastar)
 - adjustable Pininfarina steering wheel
 - high-speed magnetic compass
 - electronic engine controls
 - bow thruster control

- hydraulic anchor winch remote control
- colour radar (with scanner) and GPS/chart plotter(s) (twin 15.6" displays)
- 1 x 15" Böning display
- audible and visual alarm engine warning system
- autopilot
- speed and distance log
- echo sounder with alarm
- VHF with DSC R/T with intercom
- remote control dual searchlight
- horn button (to operate twin electric horns)
- audible and visual alarm for bilge pumps (via Böning)
- engine room fire extinguisher warning system
- Automatic fog horn with loudhailer
- Chart storage
- Drink holders (2)
- Toughened glass screen (clear for night vision) with windscreen de-mist system
- Windscreen wipers with freshwater windscreen wash
- Black mesh sunscreens
- Bilge pump controls with visual pump running warnings
- 24v and 240v electrical control panel

- Riding light, helm and navigation light control switches
- Dimmable LED overhead/concealed lighting (24V) with night lighting & scene selection
- V-groove planked timber-laid flooring (including steps to saloon)
- 220/240v outlets (1)
- USB charging points (2) (1x USB-A and 1x USB-C)
- Watertight pantograph door giving direct access from starboard side deck
- Electric drop window to port

SALOON

- Large sofa to starboard with storage below
- Sofa to port with crockery storage draw
- Coffee table
- No skylight/skylight blinds to saloon area as standard
- Panoramic tinted toughened glass windows port and starboard
- Manual sheer roller blinds to all outboard windows (not including helm area)
- 55" LED TV on rise and fall
- Naim Uniti Atom audio system with speakers (2) and subwoofer

- Dimmable LED overhead/concealed lighting (24V) with scene selection
- 220/240v outlets (2)
- USB charging points (4) (2x USB-A and 2x USB-C)
- Onboard ethernet router & 4G internet modem
- Access stairway to lower accommodation
- Fitted carpet

GALLEY

- Granite/quartz worktop
- Galley units in HPL
- Miele 4-zone induction hob
- Hob extractor fan
- Miele combination convection oven with grill/microwave
- Sub-zero single full height refrigeration units with deep freeze drawers
- Miele slimline dishwasher
- 1.5 bowl stainless-steel sink with mixer tap
- Chopping board & storage
- Twin waste bin
- High and low-level storage cupboards and drawers
- Cutlery storage
- 220/240v power outlets (4)

- LED overhead & task lighting (24V)
- Manual sheer roller blinds to windows
- V-groove planked timber-laid flooring
- Starboard side sideboard containing storage units, glass storage, icemaker and refrigeration
- 3-panel stainless-steel framed cockpit doors, opening to starboard side, with port side window opening
- Manual skysol blind aft patio doors and adjacent windows

ACCOMMODATION

- All cabins and bathrooms feature opening portholes and air conditioning
- All cabins feature 220/240v power points
- All en-suites feature 240v shaver points

OWNER'S STATEROOM

- Large double bed with bedside tables and drawers below
- Dressing area with full length mirror, hanging, shelf and drawer storage
- Built-in safe
- Port side dressing table with integrated mirror, chair, storage drawers and cupboards
- Starboard side sofa with storage drawers to

forward bulkhead

- 55" LED TV
- Naim Uniti Atom audio system with speakers (2) and subwoofer
- Panoramic windows including opening portholes
- Manual Venetian blinds to hull windows
- Dimmable LED overhead/concealed lighting (24V) with scene selection
- 220/240v outlets (2)
- USB charging points (4) (2x USB-A and 2x USB-C)
- Fitted carpet

EN-SUITE BATHROOM

- Electric freshwater toilet
- Twin wash basins and vanity top in thermoformed Solid Surface
- Bathroom cabinets in interior boat timber choice (please specify), with chrome bathroom hardware
- Mirror
- Storage lockers
- Shower compartment with automatic pump out
- Extractor fan
- Heated towel rail

- Window with opening porthole
- Manual tension Venetian blind
- LED overhead and concealed lighting (24V)
- Bathroom accessories
- Solid Surface flooring, with synthetic teak accents (weathered) applied to feature shower bulkheads and shower floor

FORWARD STATEROOM

- Large double bed with bedside tables and drawers below
- Built-in safe
- Twin double wardrobes
- Port side dressing table with integrated mirror, stool and storage drawers
- 43" LED TV
- Naim Uniti Atom audio system with speakers (2)
- Panoramic windows including opening portholes
- Manual Venetian blinds to hull windows
- Dimmable LED overhead/concealed lighting (24V) with scene selection
- 220/240v outlets (2)
- USB charging points (4) (2x USB-A and 2x USB-C)

- Fitted carpet

EN-SUITE BATHROOM

- Electric freshwater toilet
- Wash basin and vanity top in thermoformed Solid Surface
- Bathroom cabinets in interior boat timber choice (please specify), with chrome bathroom hardware
- Mirror
- Storage lockers
- Shower compartment with automatic pump out
- Extractor fan
- Window with opening porthole
- Manual tension Venetian blind
- LED overhead and concealed lighting (24V)
- Bathroom accessories
- Solid Surface flooring, with synthetic teak accents (weathered) applied to feature shower bulkheads and shower floor

PORT GUEST CABIN

- Two single beds with drawers below
- Bedside table
- Wardrobe with shelves
- Mirror

- Storage lockers
- Window with opening portholes
- Manual Venetian blinds to hull window
- Dimmable LED overhead/concealed lighting (24V) with scene selection
- Individual berth lights
- 220/240v outlets (1)
- USB charging points (2) (1x USB-A and 1x USB-C)
- Fitted carpet

EN-SUITE BATHROOM

- Electric freshwater toilet
- Wash basin and vanity top in thermoformed Solid Surface
- Bathroom cabinets in interior boat timber choice (please specify), with chrome bathroom hardware
- Mirror
- Storage lockers
- Shower compartment with automatic pump out
- Extractor fan
- Windows with opening porthole
- Manual tension Venetian blind
- LED overhead and concealed lighting (24V)
- Bathroom accessories

- Solid Surface flooring, with synthetic teak accents (weathered) applied to feature shower bulkheads and shower floor

STARBOARD GUEST CABIN

- Double bed with drawers below
- Bedside table
- Dressing table with stool
- Wardrobe with shelves
- Mirror
- Storage lockers
- Window with opening portholes
- Manual Venetian blinds to hull windows
- Dimmable LED overhead/concealed lighting (24V) with scene selection
- Individual berth lights
- 220/240v outlets (1)
- USB charging points (2) (1x USB-A and 1x USB-C)
- Fitted carpet

EN-SUITE BATHROOM

- Electric freshwater toilet
- Wash basin and vanity top in thermoformed Solid Surface
- Bathroom cabinets in interior boat timber

choice (please specify), with chrome bathroom hardware

- Mirror
- Storage lockers
- Shower compartment with automatic pump out
- Extractor fan
- Windows with opening porthole
- Manual tension Venetian blind
- LED overhead and concealed lighting (24V)
- Bathroom accessories
- Solid Surface flooring, with synthetic teak accents (weathered) applied to feature shower bulkheads and shower floor

LOBBY / PASSAGEWAY AREA

- Linen cupboard below companionway stairs
- Top-loading storage unit outboard in window side liner
- Sideboard with mirror above
- Combination washer/dryer located below companionway stairs
- Dimmable LED overhead/concealed lighting (24V)
- Fitted carpet
- Manual roller blind to window

CREW QUARTERS

N.B. All lower crew furniture is in gloss white laminate, with Koko White Solid Surface (gloss finish) bathroom vanity unit tops and Koko White Solid Surface (satin finish) bathroom floors

CREW CABIN

- Access to engine room
- Twin bunk beds with storage below
- Wardrobe
- Mirror
- Storage locker
- Opening porthole
- Mono-command Venetian blind
- LED overhead lighting (24V)
- Individual berth light (2)
- 220/240v outlets (1)
- USB charging points (2) (1x USB-A and 1x USB-C)
- Non-slip safety flooring

CREW BATHROOM

- Electric freshwater toilet
- Washbasin with Koko White (gloss finish) Solid Surface vanity top
- Mirror

- Storage lockers
- Shower compartment with automatic pump out
- Extractor fan
- LED overhead lighting (24V)
- Bathroom accessories
- Solid Surface flooring in Koko white (satin finish)

CREW AREA

- Access from transom door
- Hanging rails
- Storage locker
- LED overhead lighting (24V)
- Non-slip safety flooring
- Optional crew microwave and fridge (not available with SEABOB storage)
- Optional SEABOB storage (not available with microwave and fridge)
- Optional third berth
- Crew area is in gloss white laminate finish

POWER AND DRIVE SYSTEMS

- Forward and aft engine room bulkheads and engine room deck head integrally bonded including insulation with acoustafoam layers (Ref: Development Standard DS876)

- High volume air intakes
- Engine room extractor fan with electronic time delay
- Engine exhaust silencers and water-cooled exhausts
- Engines flexibly mounted
- Automatic fire extinguisher with remote override control
- Automatic and manual bilge pumps
- Propeller shafts in Marinemet
- 5-bladed propellers in nickel aluminium bronze
- High speed balanced rudders
- Cathodic protection for stern gear
- Stern gear, engines, fuel tank fillers, etc all electrically bonded
- LED Engine room lighting
- Engine room access from transom (via crew area) and cockpit deck hatch
- Power-assisted electro-hydraulic steering system
- Electronic engine and gear shift controls
- Bow thruster with dual-station controls (310KgF)
- Fresh water supply point in engine room
- Dripless self-aligning shaft seals

ELECTRICAL SYSTEMS

24 Volt

- 4x heavy duty engine start battery
- 6x heavy duty auxiliary batteries
- 2x heavy duty generator start batteries
- Battery link facility with remote control at helm position
- Remote battery isolator control switches at main switch panel position
- Both battery banks are charged using a voltage sensitive relay that parallels both battery banks when a charging source is present
- 1 x 100A charger, 1x 100A-3500W charger/inverter & 1x 10A charger (for generator batteries)
- Circuit breakers on all circuits
- 24v to 12v converters for certain navigation and radio circuits
- 24v to 240v/50Hz inverter for saloon a/v and galley fridge
- Galvanic isolation system
- Princess Connect telemetry and maintenance system

220/240 Volt

- European specification: Standard 2x 27kW @

- 50Hz with optional upgrade up to 2 x 28kW @ 50Hz diesel generators in own sound shields, water cooled and with specially silenced exhaust systems and with remote operation from main control panel
- USA specification: Standard 2x 29kW @ 60Hz with optional upgrade up to 2 x 32kW @ 60Hz diesel generators in own sound shields, water cooled and with specially silenced exhaust systems and with remote operation from main control panel
- 220/240v shore power inlets (2x 63amp single phase)
- Shore power/generator change over control operated from main control panel
- Polarity check system
- Earth leakage safety trip, circuit breakers on all circuits
- Power points (240v) in all cabins and living areas, helm position and galley
- 240v shaver points in washrooms
- 2kW immersion heaters for fresh water (2)

FUEL SYSTEM

- Main fuel tank with a total of 7000 litres fuel capacity – (8800 litres if long range fuel tank is specified.)
- Fuel fillers to port and starboard
- High capacity duplex fuel filters/water traps with integral changeover valves and water sensors connected to alarms at helm position
- Remote fuel isolation controls in cockpit locker for main engines and generators
- Fuel gauges at helm position

AIR CONDITIONING SYSTEM

- Air conditioning/heating reverse cycle (chilled water)
- 162,000 BTU fan capacity with 144,000 BTU chiller capacity suitable for temperatures to 40°C (tropical) incorporating a windscreen demist facility
- Outlets in all areas

WATER SYSTEM

- Fresh water tanks giving 1400 litres capacity plus 200 litres hot water calorifier
- Automatic water pump with filter (80l/min)
- Water level gauge

- Deck filler
- Pump control at helm positions
- Electric freshwater toilet system linked to 540 litres holding tank, content gauge and low noise electric overboard discharge, with macerator backup system as well as dockside discharge system

EXTINGUISHERS/FIRE CONTROL SYSTEMS

- Automatic engine room fire extinguisher system (with manual override) and warning system at helm position providing automatic shutdown of engines, generators and ventilation fans
- Hand operated fire extinguishers in all guest cabins, galley, crew quarters and sportbridge
- Smoke detector (and heat detector as required) on each deck (10-year battery life)
- Automatic under helm fire extinguisher at lower helm

BILGE PUMPS

- Automatic/manual override electric bilge pumps in engine room, lazarette area and forward accommodation
- High capacity manual bilge system with suction points in the same areas

- Electric bilge pumps have controls and warning lights with audible alarm at helm position

OTHER STANDARD EQUIPMENT

- Ensign staff
- Fenders (8)
- Mooring warps (4)
- First Aid Kit
- Set of towels (8 large, 8 hand)
- Bed cover supplied to all cabins (except crew cabin)
- Complete set of Lucrezia crystal glassware (8 settings consisting of tumbler, highball and wine glasses)
- Set of Sous Le Soleil crockery (8 settings consisting of plate, cake plate, dessert plate, bowl, cup & saucer)
- Set of stainless-steel cutlery (8 settings of David Mellor “Paris” cutlery – 7 pieces)
- Tool kit
- Boat hook
- Owner’s manual and engine manual
- Ship’s document case

FINISHES

- Teak-laid decks to all external deck areas (including sportbridge)
- V-groove planked timber-laid floor to galley and lower helm position
- Furniture in Rovere oak with satin finish as standard. Optional finishes include ash or silver oak with a satin finish or walnut wood in a satin or gloss finish
- Solid Surface floors in all bathroom suites in guest accommodation and optional day head
- Thermoformed Solid Surface wash basin vanity tops in all bathroom suites in guest accommodation and optional day head
- Bathroom cabinets in interior boat timber choice (please specify), with chrome bathroom hardware as standard in all guest bathrooms and optional day head (excluding crew bathroom)
- Synthetic teak accents (weathered) applied to feature shower bulkheads and shower floor in guest ensuites
- Galley counter top in granite or quartz
- Choice of high-quality carpets and fabrics from an extensive range
- Exterior upholstery to be selected from the Comfort Exterior fabric range (no contrast)
- Blinds to all windows and portholes (excludes helm and pantograph doors)
- All lower crew furniture is in gloss white laminate, with Solid Surface bathroom floor and vanity top
- Crew cabins have non-slip safety flooring
- Non-slip safety flooring to crew mess and passageway

S 72



Dynamic extended styling lines synonymous with the Princess S Class define the S72. Equipped with twin MAN V12 engines at 1650 or 1800 horsepower and a resin-infused deep-V hull, she delivers dynamic performance and smooth handling at speeds of up to 36 knots. The cockpit features a unique sociable U-shaped seating area with modular seating, folding teak table and servery unit – the perfect place to entertain, or to sit back, relax, and enjoy the yacht’s exhilarating performance. The cockpit bar connects to the galley unit to create an almost seamless transition from outside to in, with a glass window partition which folds up from the unit below to provide servery access when entertaining.





The saloon is designed for sociable living, with a large L-shaped dining area opposite the fully equipped galley, leading to a cavernous main deck saloon with U-shaped sofa, Princess Design Studio coffee table, and an elegant sideboard unit containing a 55" UHD LED TV on rise and fall, plus companion seating with fold out table opposite the main helm.

Below deck, eight guests enjoy four beautifully appointed cabins, three of which are en-suite, all bathed in natural light from elegant hull glazing, with a further twin cabin with en-suite aft for occasional guests or crew. A dedicated staircase leads from the main deck to the full-beam owner's stateroom amidships, via a private lobby area in the lower companion way.

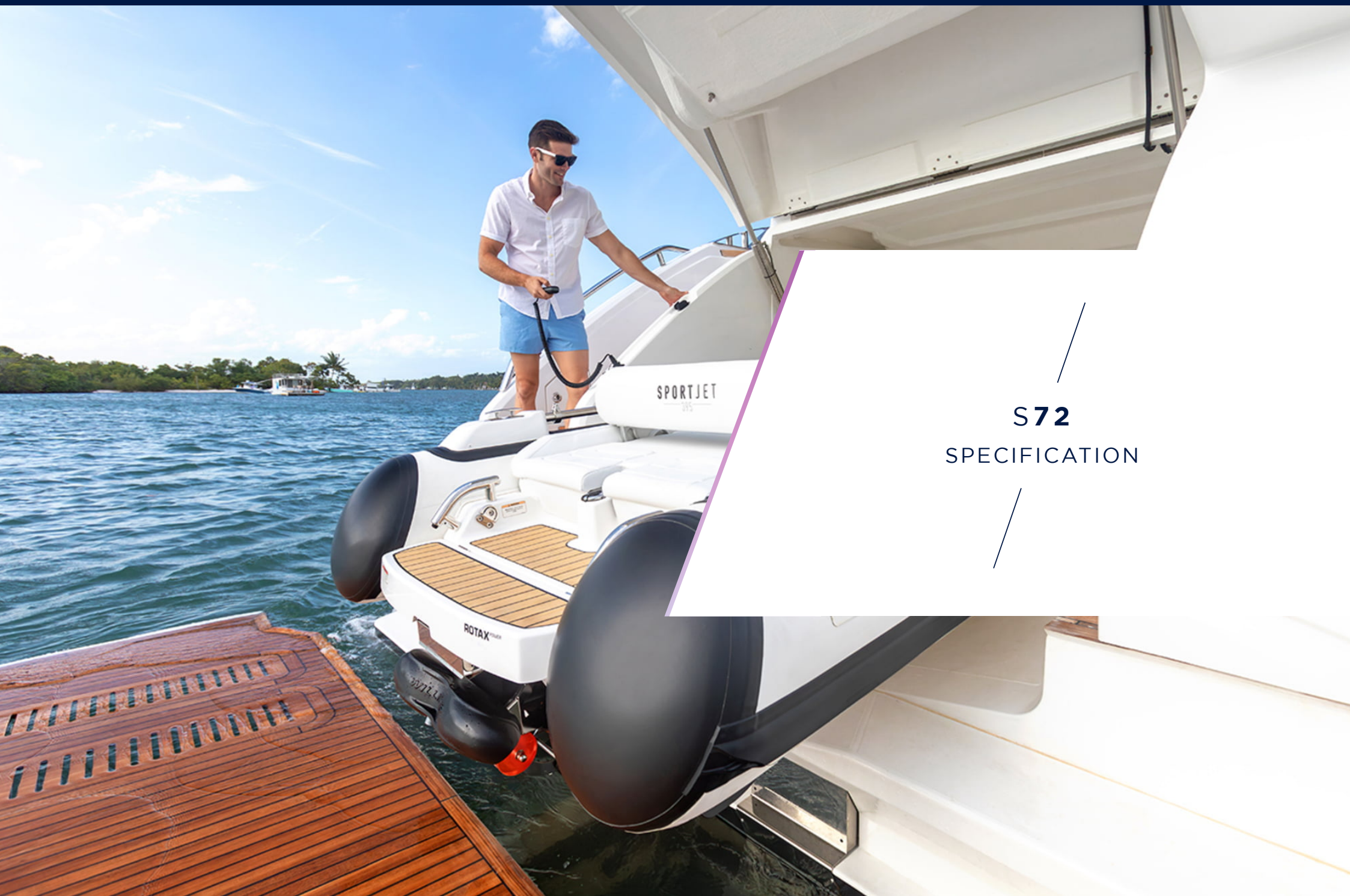


TAKE A VIRTUAL TOUR OF THE S72



EXPERIENCE THE S72

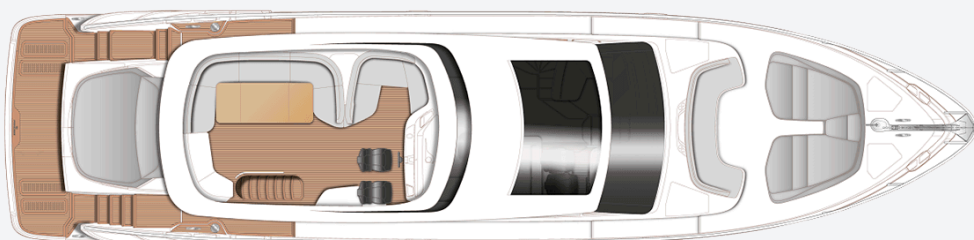




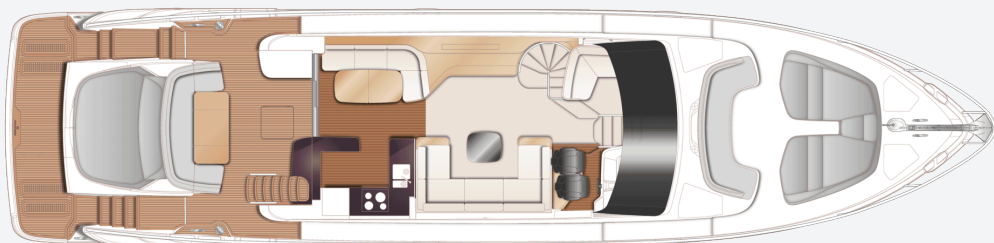
SPORTJET
315

ROTAX

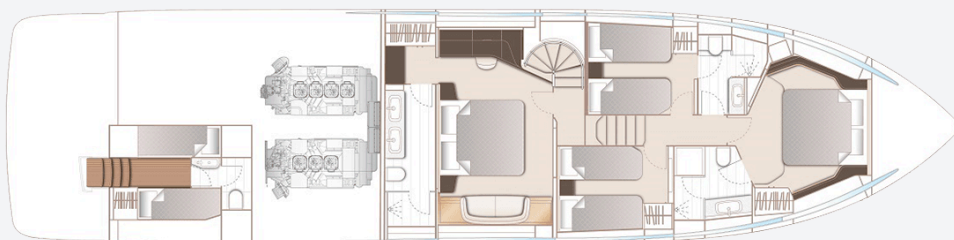
S72
SPECIFICATION



S72 Sportbridge



S72 Main Deck



S72 Lower Deck

PRINCIPAL DIMENSIONS

Length overall (incl. pulpit)	75ft 9in (23.09m)
Length overall (excl. pulpit)	73ft 2in (22.30m)
Beam	17ft 11in (5.45m)
Draft	5ft 8in (1.72m)
Displacement approx. (Halfload)	52,814 kg (116,435lbs)*
Fuel capacity	990 gal/1,189 US gal/4,500l
Water capacity (excl. calorifier)	184 gal/221 US gal/820l

ENGINES

MAN V12 1800 (2 x 1800mhp)	Speed range: 36-38 knots†
-----------------------------------	------------------------------

FULL SPECIFICATION

DECK FITTINGS

- Teak laid transom platform, transom steps, cockpit deck, sportbridge and sportbridge stairway areas. Teak laid side deck and foredeck walkthrough areas are optional
- Reversible electric anchor winch with foredeck, main helm and sportbridge controls
- Stem head roller with automatic anchor launch and retrieve
- Self-stowing 50kg/110lbs Delta anchor with 60m of 12mm chain
- Twin electric stern line mooring winches
- Deck hatch access to chain locker
- Bow rope stowage locker
- Freshwater deck/anchor wash
- Stainless steel bow and stern fairleads
- Stainless steel bow, stern and spring cleats (2 pairs)
- Stainless steel pulpit and guard rails
- Stainless steel coachroof and sportbridge handrails
- Foredeck escape hatch
- Foredeck U-shaped seating area

- Foredeck sunbathing area, twin sunbeds with integrated adjustable headrests with aft facing seat conversion. Storage locket between sunbeds with optional cool box
- Twin coachroof lockers for storage of fenders, ropes and covers
- PVC rubbing band with stainless steel insert
- LED deck level lighting integrated into scene selection lighting control
- Illuminated crown logo on transom
- Full set of IMCO navigation lights
- Riding light
- Stern docking lights
- Twin beam searchlight with dual station remote controls
- Loudhailer
- Twin electric horns
- Ensign socket and pole
- Fuel and water fillers
- Holding tank dockside discharge connection

COCKPIT AND BATHING PLATFORM

- Self-draining
- Upholstered U-shaped seating and sunpad. Forward sections movable to reconfigure cockpit
- Folding teak table with drink rings
- Servery unit
- LED overhead and deck level lighting integrated into scene selection lighting control
- Stainless steel handrails
- Garage to take tender 3.9m with electro-hydraulic door and tender launch system with electric winch
- Top hinged door to aft crew cabin
- Lockable gas strut assisted hatch to engine room/lazarette
- Liferaft stowage locker
- Rope storage lockers
- Locker containing remote fuel cocks, manual bilge pump with valve chest and manual controls for automatic fire extinguishers (to include gas ram)
- Integral stairway to sportbridge with teak step

- treads
- Cockpit cover
- Twin transom gates leading to bathing platform
- Retractable bathing ladder (manual) in side of hydraulic platform
- Transom steps to access stern from bathing platform when in lowered position
- Hot and cold transom shower
- 220/240v shore support inlet
- Electro-hydraulic raise / lower teak laid bathing platform (450kg SWL)
- Standard teak with Princess logo (small)
- Bathing platform aft rail
- Transom locker with internal rail in garage door

SPORTBRIDGE

- Dual station instruments and controls (see Lower Helm Position) and USB sockets (2x USB-A)
- Power assisted electro hydraulic steering with adjustable wheel
- Audible and visual alarm for bilge pumps
- Engine-room fire extinguisher warning system
- Twin helm seats with fore and aft adjustment for helmsman
- Port L-shaped seating (converts to sunbed)

- Large U-shaped upholstered seating
- Cup holders between L-shaped and U-shaped seating
- Folding teak table with drink rings
- Wet-bar with barbecue, sink, waste bin and storage
- Storage locker and navigator seat pedestal with integrated cool box
- Naim Uniti Atom audio unit with JL Audio M6-650X-L waterproof speakers (2)
- Clear view hatch to aft cockpit with stainless safety rail with glass balustrade
- Wind deflector screens
- Stainless steel handrails
- LED deck level lighting integrated into scene selection lighting control
- GRP radar arch
- Twin matching whip aerials for VHF R/T and radio
- Console, table and seat covers
- Optional GRP hardtop panel

LOWER HELM POSITION

- Twin leather helm seats, including inboard arm rest, with fore and aft adjustment for helmsman's seat

- Instrument console with LED display incorporating engine instruments, fuel gauges, alarms and rudder position indicator
- Dual station instruments and controls at Sportbridge and Lower Helm Positions:
 - Power-assisted electro-hydraulic steering
 - Adjustable steering wheel
 - High-speed magnetic compass
 - Electronic engine controls
 - Bow thruster control
 - Electric anchor winch remote control
 - Colour radar (with scanner) and GPS/chartplotter
 - Autopilot
 - Speed and distance log
 - Echo sounder with alarm
 - VHF with DSC R/T with intercom
 - Remote control searchlight
 - Horn button
 - Controls for standard trim tabs
- Böning system integrated with the following functionalities (displayed on separate dedicated display at helm):
 - Engine instrumentation (including fuel levels and fuel flow)
 - Digital boat alarms

- Scene selection lighting controls
- AC/DC control and monitoring
- Drinks holders
- Toughened glass screen (clear for night vision) with windscreen demist system
- Windscreen wipers with freshwater windscreen wash
- Black mesh sunscreens
- Bilge pump controls with visual pump running warnings
- 24v and 240v electrical control panel
- Riding light, helm and navigation light control switches
- USB connection point (1x USB-A and 1x USB-C)
- LED overhead lighting (24v) and night lighting integrated into scene selection lighting control
- Pantograph helmsman's door to starboard side deck
- 'V' groove planked timber flooring

SALOON

- U-shaped sofa
- Coffee table
- L-shaped sofa opposite helm area with fold-out companion table and 220/240v outlet
- Sideboard unit with bottle and glass storage

- Refrigerator
- UHD LED TV (55") on rise and fall
- Naim audio system paired with speakers (2) and subwoofer
- Electric drop window to port
- Venetian blinds (in matte black) to all windows
- Dimmable LED overhead and concealed lighting (24v) integrated into scene selection lighting control
- Access stairway to lower accommodation
- Separate access stairway to owner's stateroom
- Fitted carpet

DINING AREA

- L-shaped sofa
- Folding dining table, Solid Surface countertop with timber edge
- Stainless steel framed sliding patio door to cockpit with integrated hinging window aft of galley
- Venetian blinds (in matte black) to windows and manual skysol blind to patio door
- Dimmable LED overhead and concealed lighting (24v) integrated into scene selection lighting control
- USB connection points (1x USB-A and 1x USB-

C)

- 'V' groove planked timber flooring

GALLEY

- Solid surface worktop
- Solid surface countertop to cockpit and port servery unit
- Ceramic 4-zone induction hob
- Hob extractor
- Combination microwave/convection oven with grill
- Solid Surface 1.5 bowl sink with mixer tap
- Chopping board
- Deep corner below counter storage bin with lid to match galley countertop
- Full height refrigerator/deep freeze
- Dishwasher
- Icemaker
- Waste bin
- Drawers and storage cupboards
- Venetian blinds (in matte black) to window
- LED overhead and task lighting (24v) integrated into scene selection lighting control
- 220/240v outlets (4)
- 'V' groove plank timber flooring

ACCOMMODATION

- All cabins and bathrooms feature opening portholes and air conditioning
- All cabins feature 220/240v power points
- All bathrooms feature electric freshwater toilets and 240v shaver points

OWNER'S STATEROOM LOBBY

- Access stairway to owner's stateroom
- Panoramic window
- Manual venetian blinds
- A washer/dryer with cupboard above is fitted in the forward passageway in the guest accommodation (a separate washer and dryer may be optionally installed in place of the standard unit)
- LED overhead and concealed lighting (24v) integrated into scene selection lighting control
- Fitted carpet

OWNER'S STATEROOM

- Large double bed with drawers below
- Twin bedside tables
- Dressing area with wardrobes and storage
- Built in safe
- Dressing table with chair

- Mirror
- Sofa
- Storage lockers and drawers
- 55" UHD LED TV
- Naim audio system paired with speakers (2)
- Panoramic windows including opening portholes
- Manual venetian blinds
- Dimmable LED overhead and concealed lighting (24v) integrated into scene selection lighting control
- Individual berth lights
- 220/240v outlets (3)
- USB charging point (3) (each comprising 1x USB-A and 1x USB-C)
- Fitted carpet

EN-SUITE BATHROOM

- Twin washbasins and vanity top in thermoformed Solid Surface
- Mirror
- Storage lockers
- Shower compartment with automatic pump out
- Extractor fan
- Window with opening porthole and manual tension venetian blind

- LED overhead and concealed lighting (24v) integrated into scene selection lighting control
- Bathroom accessories
- Flooring in Solid Surface

FORWARD STATEROOM

- Large double bed with drawers below
- Wardrobe with shelves
- Dressing table
- Mirror
- Storage lockers and drawers
- Window with opening portholes
- Manual venetian blinds
- Deck hatch
- LED overhead and concealed lighting (24v) integrated into scene selection lighting control
- Individual berth lights
- 220/240v outlets (4)
- USB charging point (2) (each comprising 1x USB-A and 1x USB-C)
- Fitted carpet

EN-SUITE BATHROOM

- Washbasin and vanity top in thermoformed Solid Surface
- Mirror

- Storage lockers
- Shower compartment with automatic pump out
- Extractor fan
- Window with opening porthole
- Manual tension Venetian blind
- LED overhead and concealed lighting (24v) integrated into scene selection lighting control
- Bathroom accessories
- Flooring in Solid Surface

PORT GUEST CABIN

- Two single beds with drawers below (with option of double bed conversion)
- Bedside table
- Wardrobe with shelves
- Mirror
- Storage lockers and drawers
- Window with opening portholes
- Manual venetian blinds
- LED overhead and concealed lighting (24v) integrated into scene selection lighting control
- Individual berth lights
- 220/240v outlets (2)
- USB charging points (1x USB-A and 1x USB-C)
- Fitted carpet

EN-SUITE BATHROOM

- Washbasin and vanity top in thermoformed Solid Surface
- Mirror
- Storage lockers
- Shower compartment with automatic pump out
- Extractor fan
- Window with opening porthole
- Manual tension Venetian blind
- LED overhead and concealed lighting (24v) integrated into scene selection lighting control
- Bathroom accessories
- Flooring in Solid Surface
- Day access door from passageway (port side)

STARBOARD GUEST CABIN

- Two single beds with drawers below (with option of double bed conversion)
- Bedside table
- Wardrobe with shelves
- Mirror
- Storage lockers and drawers
- Window with opening portholes

- Manual venetian blinds
- LED overhead and concealed lighting (24v) integrated into scene selection lighting control
- Individual berth lights
- 220/240v outlets (2)
- USB charging points (1x USB-A and 1x USB-C)
- Fitted carpet

CREW CABIN

- Top hinge door access from transom
- Two single beds with storage below
- Wardrobe with shelf
- Mirror
- Storage lockers and drawers
- Opening portlight
- LED overhead lighting (24v)
- Individual berth lights
- 220/240v outlets (2)
- USB charging point (2) (each comprising 1x USB-A and 1x USB-C)
- Non-slip safety flooring
- White laminate furniture

CREW BATHROOM

- Washbasin with Carrara white Solid Surface vanity top (gloss finish)
- Mirror
- Storage lockers
- Shower compartment with automatic pump out
- Extractor fan
- LED overhead lighting (24v)
- Bathroom accessories
- Non-slip flooring
- Standard aft lazarette incorporates overhead lighting, access hatch with ladder and storage space via transom top hinged door

POWER AND DRIVE SYSTEMS

- Engine room soundproofed
- High volume air intakes
- Engine room extractor fan with electronic time delay
- Engine exhaust silencers and water-cooled exhausts
- Engine beds integrally moulded with hull for strength and vibration absorption
- Forward and aft engine room bulkheads integrally bonded
- Engines flexibly mounted

- Automatic fire extinguisher with remote override control
- Automatic and manual bilge pumps
- Propeller shafts in Marinemet
- 5-bladed propellers in nickel aluminium bronze
- High speed balanced rudders
- Cathodic protection for sterngear
- Sterngear, engines, fuel tank fillers, etc all electrically bonded
- Bow thruster (250kgf/551lbf) with dual-station controls
- Engine room lighting
- Engine room access and ladder
- Power-assisted electro-hydraulic steering system
- Trim tabs with indicators
- Electronic engine and gear shift controls
- Fresh water supply point in engine room
- Dripless self-aligning shaft seals

ELECTRICAL SYSTEMS

24 Volt:

- 4 x heavy duty batteries for engine starting
- 6 x heavy duty auxiliary batteries
- Battery link facility with remote control at helm position

- Both battery banks are charged using a voltage sensitive relay that parallels both battery banks when a charging source is present
- 1 x 80-amp 24v battery charger and 1 x combination 3.0 kW 70-amp inverter charger
- 6-amp battery charger for generator battery
- Remote battery isolator control switches at main switch panel position
- Circuit breakers on all circuits
- 24v to 12v converters for certain navigation and radio circuits
- 24v to 240v/50Hz inverter for saloon A/V, galley fridge and telephone system
- Galvanic isolation system
- Princess Connect telemetry and maintenance system

220/240 Volt:

- 22.5kW generator in own sound shield with water-cooled and specially silenced exhaust
- Automatic fire extinguisher situated by generator
- 63-amp shore power inlet
- Shore power/generator change over control operated from main control panel
- Polarity check system

- Earth leakage safety trip, circuit breakers on all circuits
- Power points (240v) in all cabins and living areas, helm position and galley
- Shaver points in washrooms
- Smoke detectors (galley, stateroom, lower lobby and crew area)
- Böning system

AIR CONDITIONING

- Air conditioning/heating reverse cycle
- 128,000 BTU chiller with 128,000 BTU fan capacity
- Suitable for ambient temperature to 40°C (e.g. tropical)
- Controls in all cabins and outlets in all areas (includes outlets in bathrooms and crew cabin)
- Standard 22.5kW generator is suitable (N.B. this has sufficient capacity for Gyro stabilisers as well as air conditioning)

FUEL SYSTEM

- Fuel tanks (in NS8 marine grade alloy) with interconnection system giving 4,500l/1,189 US gal/990 gal capacity
- Fuel fillers on port and starboard side decks

- High-capacity duplex fuel filters with water traps and change-over valves, water warning sensors connected to warning lights at lower helm
- Remote fuel cocks in cockpit locker
- Fuel gauges at main helm console

WATER SYSTEM

- Water tanks totalling 836l/221 US gal/184 gal plus 73l/19 US gal/16 gal hot water calorifier
- Water heated by engines and 240v immersion heater
- Automatic water pump with filter
- Main circuit breaker at switch panel
- Water level gauge
- Deck filler
- Electric quiet flush toilet system with 400l/106 US gal/88 gal holding tank, content gauge and low noise electric overboard discharge, with macerator backup system as well as dockside discharge system

FIRE EXTINGUISHERS / CONTROL SYSTEMS

- Automatic/manual override fire extinguishers in engine room
- Hand operated fire extinguishers (7) in owner's

stateroom, forward stateroom, port and starboard guest cabins, galley, lower helm position and aft cabin

BILGE PUMPS

- Automatic/manual override electric bilge pumps in engine room (2), rudder area and forward accommodation (6 in all)
- High-capacity manual bilge pump with valve system and suction points in same areas
- Electric bilge pumps have controls and warning lights at main helm and warning light with audible alarm at sportbridge helm

OTHER STANDARD EQUIPMENT

- Ensign staff
- Fenders (8)
- Mooring warps (4)
- Boat hook
- First Aid kit
- Tool kit
- Owner's manual and engine manual
- Functional bed covers supplied to all cabins (except optional crew cabin)
- Set of towels (8 large, 8 hand)

- Set of glassware (8 settings consisting of tumbler and wine glasses)
- Set of Princess china (8 settings consisting of plate, side plate, bowl, cup and saucer)
- Set of cutlery (8 settings of David Mellor "Paris" cutlery 7 pieces)
- Ship's document case
- Anchor winch back up handle

FINISHES

- Teak-laid decks to transom platform, steps to flybridge and sportbridge
- 'V' groove planked timber floor to galley, dinette and helm
- Furniture in Rovere oak with satin finish as standard. Optional finishes include ash or silver oak with a satin finish or walnut wood in a satin or gloss finish
- Solid Surface floors in all bathroom suites
- Thermoformed Solid Surface wash hand basin vanity tops in all bathroom suites
- Galley countertop in Solid Surface with Solid Surface Sylmar White sink
- Choice of high-quality carpet and upholstery fabric from extensive range
- Blinds or sunscreens to all windows, doors and

portholes

- Crew cabin has non-slip safety flooring, crew bathroom floor is Solid Surface with Solid Surface vanity tops



S 65



With a sleek exterior profile, the S65 balances dynamic form with breathtaking performance. The main deck flows from outside to in, surrounded by large hull length windows, sliding doors aft, an electrically sliding roof and an aft galley which connects beautifully to the cockpit.









Below deck, four cabins, including a full-beam master stateroom, can accommodate up to eight guests, plus optional crew cabin with en-suite.

Generously appointed deck areas, which include a spacious foredeck seating area, aft sunpad, hydraulic bathing platform and 3.3m tender garage become the perfect base for watersports.

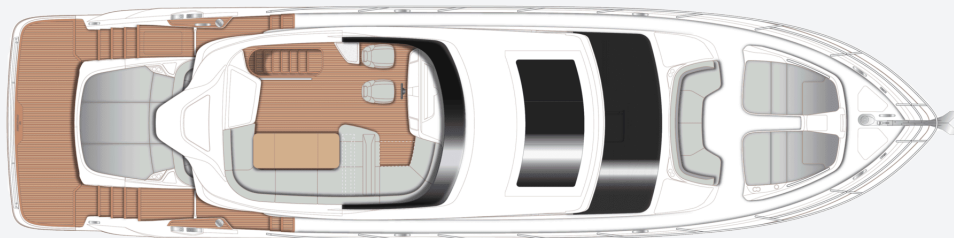
The sportsbridge offers flexible seating areas with the option to adapt the space via a moveable backrest to offer a forward sunbed with storage below.



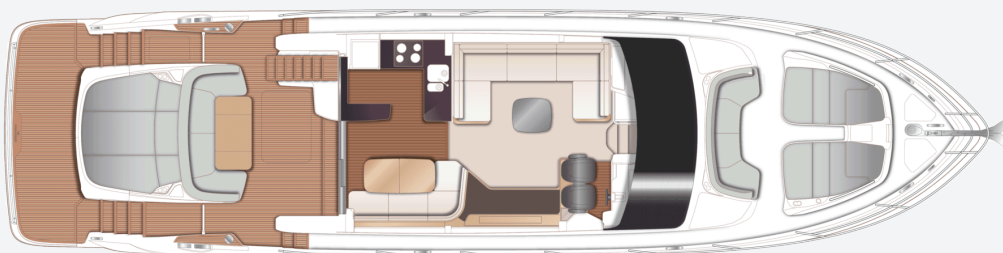


S65
SPECIFICATION

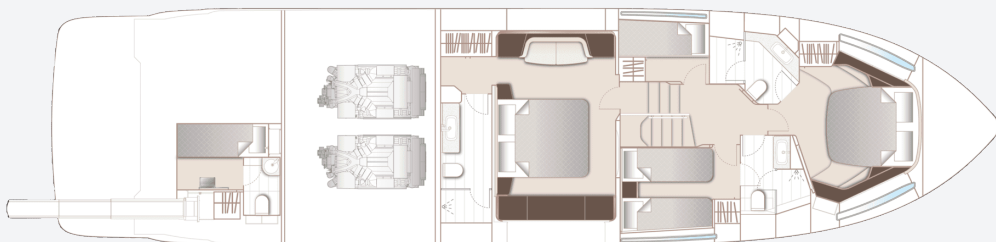




S65 Sportbridge



S65 Main Deck



S65 Lower Deck

PRINCIPAL DIMENSIONS

Length overall (incl. pulpit) 67ft 7in (20.61m)

Length overall (excl. pulpit) 65ft 8in (20.03m)

Beam 16ft 9in (5.09m)

Draft 5ft 5in (1.66m)

Displacement approx. (half load) 42,277kg (93,205lbs)*

Fuel capacity 902 gal/1,083 US gal/4,100l

Water capacity (excl. calorifier) 176 gal/212 US gal/ 802l

ENGINES

MAN V12-1400 (2 x 1400hp) Maximum speed - 34-36 knots[†]

FULL SPECIFICATION

DECK FITTINGS

- Teak-laid transom platform, transom steps, cockpit deck, Sportbridge stairway and steps to side deck
- Reversible electric anchor winch with foredeck and helm position controls
- Stem head roller with automatic anchor launch and retrieve
- Self-stowing anchor system incorporating one Lewmar Delta anchor (40kg/88lb) with 60m of 9.5mm chain
- Bow rope storage locker
- Deck storage lockers for fenders
- Stainless steel bow fairleads (2) and stern fairleads (2)
- Cast stainless steel bow (2), stern (2) and spring cleats (4)
- Stainless steel pulpit and guardrails (round 32mm)
- Stainless steel coach roof handrails
- PVC rubbing band with stainless steel insert
- LED deck level lighting

- Illuminated crown logo to transom
- Full set of IMCO navigation lights
- Riding light
- Searchlight with remote control
- Loudhailer (connected to VHF)
- Twin electric horns
- Fuel and water fillers
- Foredeck escape hatch
- Foredeck U-shaped seating area and walk-through
- Foredeck sunbathing area with twin sunbeds including cushions with integrated storage locker and drinks holders (4)

AFT COCKPIT AND BATHING PLATFORM

- Self-draining
- U-shaped seating/dining area with folding teak table and drinks holders
- Sunbed aft with drinks holders
- Cockpit countertop (aligned with galley countertop and hinging window), with under-stairs storage unit

- LED overhead and deck level lighting
- Integral stairway to Sportbridge
- Stainless steel handrails
- Life raft stowage locker
- Rope stowage lockers
- Lockable gas strut assisted hatch to lazarette to port side
- Lockable gas strut assisted hatch to lazarette/ optional crew cabin to starboard under aft sunpad
- Lockable gas strut assisted hatch to engine room
- Locker containing remote fuel cocks, manual bilge pump with valve chest and manual controls for automatic fire extinguishers
- Twin transom gates leading to bathing platform
- Transom grab rail
- Ensign socket
- Garage (suitable for up to a Williams SportJet 345 or equivalent) with electro-hydraulic door and tender launch system with electric winch
- Electro-hydraulic raise/lower teak laid bathing platform (500kg SWL)

- Retractable bathing ladder (manual) in side of hydraulic platform
- Transom steps to access stern from bathing platform when in lowered position
- Hot and cold transom shower
- 220/240v shore support inlet in locker
- Tonneau cover

HELM POSITION

- Twin helm seats with fore and aft adjustment for helmsman, crown logo to both seats, flip up base to helm seat for door access
- Raymarine Axiom 2XL (15.6" display size) multifunction colour display, incorporating GPS/chart plotter, log and echo sounder
- Raymarine Evolution autopilot with P70Rs control head
- 9" multifunction display, displaying engine instrumentation (including fuel levels and fuel flow)
- Dual station instruments and controls at Sportbridge and Lower Helm Positions:
 - power-assisted electro-hydraulic steering
 - adjustable steering wheel
 - rudder position indicator

- magnetic compass
- electronic engine controls
- trim tab controls with indicators
- bow thruster control
- electric anchor winch remote control
- VHF with DSC R/T with intercom
- remote control searchlight
- horn button
- Storage tray
- Drinks holders
- Toughened glass screen (clear for night vision)
- Windscreen wipers with freshwater windscreen wash - review alternative control options during development
- Exterior black mesh windscreen covers
- Bilge pump controls with visual pump running warnings
- 24v and 240v electrical control panel
- Riding light, helm and navigation light control switches
- USB charging points (2) (1x USB-A and 1x USB-C)
- 220/240v outlet (1)
- LED overhead lighting (24v) and night lighting
- Pantograph helmsman's side door to starboard side deck

- Timber flooring (V-groove planked)

SPORTBRIDGE

- Dual station instruments and controls (see helm position)
- Raymarine Axiom 2XL (15.6" display size) multifunction colour display, incorporating GPS/chart plotter, log and echo sounder
- Raymarine Evolution autopilot with P70Rs control head
- 9" multifunction display, displaying engine instrumentation (including fuel levels and fuel flow)
- Adjustable steering wheel
- Drinks holders (2), storage box, and storage tray at helm position
- Separate helm and navigator seats (with sufficient space to allow ingress/egress without disturbing helmsman) with fore and aft adjustment for helmsman
- Forward U-shaped upholstered companion seating (converts to sunpad with infill)
- Aft large U-shaped upholstered seating area with storage below
- Movable back rest between dining and

companion seating (to convert seating areas between U-shaped and L-shaped)

- Teak double-fold dining table with drinks holders
- Fusion Apollo SRX-400 audio system with Wi-Fi/Bluetooth/DAB. Paired with Fusion Signature 7.7" speakers (2)
- Wet bar with waste bin, electric grill/barbecue and sink/tap, with Solid Surface countertop
- Top-loading cool box position behind navigator seat
- Clear view hatch to aft cockpit
- Wind deflector screens (grey tinted Perspex)
- Stainless steel handrails
- LED deck level lighting
- GRP radar arch
- Matched whip aerials for VHF R/T radio
- Console, seat, wet bar and table covers
- *Optional GRP Sportbridge hardtop (including LED dimmable lighting) OR Optional bimini with/without electro hydraulic operation/ lighting*
- USB charging points (2) (1x USB-A and 1x USB-C)

DECK SALOON

- U-shaped sofa with storage/crockery drawers
- Coffee table
- Electric drop window to port
- Sideboard unit with bottle and glass storage, and refrigerator
- 55" TV on rise and fall
- Fusion Apollo MS-RA770 audio system with Wi-Fi/Bluetooth/ DAB. Paired with Focal 100ICW6 speakers (2)
- Storage drawers below navigator's seat
- Panoramic tinted toughened glass windows port and starboard
- Manual tension venetian blinds (matte black) to windows
- LED overhead and concealed lighting (24v)
- Access stairway to lower accommodation
- Skylights with dark grey tint and sliding blinds (*option of powered opening roof*)
- Fitted carpet
- 220/240v outlets (2)

DINING AREA

- L-shaped sofa with storage drawer
- Folding dining table/drinks holders (4)
- Stainless steel framed sliding door to cockpit (three pane) with integrated hinging window aft of galley (one fixed pane, two sliding panes, one flip window) and integrated Skysol blind
- Manual tension venetian blinds (matte black) to windows
- LED overhead and concealed lighting (24v)
- 220/240v outlet (2)
- Timber flooring (V-groove planked)

GALLEY

- Solid Surface countertop
- 4-zone ceramic hob
- Extractor fan
- Combination microwave/convection oven with grill
- Full height fridge/freezer (281l)
- Twin-bowl (1.5) stainless steel sink with mixer tap
- Slimline full height dishwasher (9 place setting)
- Waste bin

- Drawers and storage cupboards
- Manual tension venetian blinds (matte black) to windows
- LED overhead and task lighting (24v)
- 220/240v outlets (4)
- Timber flooring (V-groove planked)

ACCOMMODATION

- All cabins and bathrooms (exc. crew bathroom) feature opening portholes
- All cabins feature 220/240v power points
- All bathrooms (exc. crew bathroom) feature 240v shaver points
- All bathrooms feature electric freshwater toilets

MASTER STATEROOM

- Large double bed with drawers below
- Twin bedside tables
- Walk-through wardrobe area with hanging, drawer storage and full-length mirror
- Dressing table
- Sofa
- Storage drawers
- 50" TV

- Fusion Apollo MS-RA770 audio system with Wi-Fi/Bluetooth/DAB. Paired with Focal 100ICW6 speakers (2)
- Panoramic windows including opening porthole
- Manual tension venetian blinds (grey)
- LED overhead and concealed lighting (24v)
- Individual berth lights
- 220/240v outlets (4) (1 per side and 2 beside vanity unit)
- USB charging points (4) (2 per side (1x USB-A and 1x USB-C))
- Fitted carpet

EN-SUITE BATHROOM

- Wash basin with thermoformed, Solid Surface vanity top
- Mirror to vanity unit
- Storage lockers
- Shower compartment with automatic pump out
- Extractor fan
- Window with opening porthole
- Manual tension venetian blind (grey)
- LED overhead lighting (24v)
- Bathroom accessories

- Solid Surface flooring

FORWARD STATEROOM

- Large double bed with drawers below
- Wardrobe with shelves and full-length mirror
- Dressing table
- Storage lockers
- Windows with opening portholes
- Manual tension venetian blind (grey)
- Deck hatch
- LED overhead lighting (24v)
- Individual berth lights
- 220/240v outlets (3) (1 per side and 1 under vanity unit)
- USB charging points (4) (2 per side (1x USB-A and 1x USB-C))
- Fitted carpet

EN-SUITE BATHROOM

- Wash basin with thermoformed, Solid Surface vanity top
- Mirror
- Storage lockers
- Shower compartment with automatic pump out

- Extractor fan
- Window with opening porthole
- Manual tension venetian blind (grey)
- LED overhead lighting (24v)
- Bathroom accessories
- Solid Surface flooring

STARBOARD GUEST CABIN

- Two single beds with drawers below (*with option of sliding double bed conversion*)
- Bedside table
- Wardrobe with shelves
- Mirror
- Storage lockers
- Window with opening portholes
- Manual tension venetian blinds (grey)
- LED overhead lighting (24v)
- Individual berth lights
- 220/240v outlets (1)
- USB charging points (2) (1x USB-A and 1x USB-C)
- Fitted carpet

EN-SUITE BATHROOM

- Wash basin with thermoformed, Solid Surface vanity top
- Mirror
- Storage lockers
- Shower compartment with automatic pump out
- Extractor fan
- Window with opening portholes
- Manual tension venetian blind (grey)
- LED overhead lighting (24v)
- Bathroom accessories
- Solid Surface flooring
- Day access door from lower lobby

PORT GUEST CABIN

- Two single beds (bunk)
- Wardrobe with shelf
- Mirror
- Storage lockers
- Window with opening portholes
- Manual tension venetian blinds (grey)
- LED overhead lighting (24v)
- Individual berth lights
- 220/240v outlet (1)

- USB charging points (2) (1x USB-A and 1x USB-C)
- Fitted carpet

LOWER ACCOMMODATION LOBBY / PASSAGEWAY AREA

- Combination washer/dryer with storage area above located below companionway stairs (*option of separate washing and drying machines if required*)
- LED overhead and concealed lighting (24v)
- Fitted carpet

OPTIONAL CREW CABIN (IN PLACE OF AFT LAZARETTE)

- Furniture in specified choice of boat timber
- Single bed with storage below
- Lockers with shelf
- Opening porthole
- Hinged door with access from hatch under aft sunpad
- LED overhead lighting (24v)
- Individual berth lights
- 220/240v outlet (1)

- USB charging point (2) (1x USB-A and 1x USB-C)
- Timber floor

EN-SUITE BATHROOM

- Bathroom in white laminate
- Wash basin with Solid Surface vanity top
- Storage lockers
- Shower with automatic pump out
- Extractor fan
- LED overhead lighting (24v)
- Bathroom accessories
- Non-slip flooring (GRP)

POWER AND DRIVE SYSTEMS

- Propeller shafts in Marinemet
- 5-bladed propellers in nickel aluminium bronze
- Bow thruster (170kgF) with dual-station controls
- High speed balanced rudders
- Power-assisted electro-hydraulic steering system
- Trim tabs with indicators
- Cathodic protection for stern gear

- Stern gear, engines, fuel tank fillers, etc all electrically bonded
- Forward and aft engine room bulkheads and engine room headlining to be integrally bonded including insulation with acoustafoam layers
- High volume air intakes
- Engine room extractor fan with electronic time delay
- Engine exhaust silencers and water-cooled exhausts
- Engine beds integrally moulded with hull for strength and vibration absorption
- Engines flexibly mounted
- Automatic fire extinguisher with remote override control
- Automatic and manual bilge pumps
- Engine room lighting
- Engine room access from cockpit deck, via hatch with ladder
- Electronic engine and gear shift controls
- Fresh water supply point in engine room
- Dripless self-aligning shaft seals

ELECTRICAL SYSTEMS

24 Volt:

- 4 x heavy duty batteries for engine starting
- 4 x heavy duty auxiliary batteries
- 1 x generator battery
- Battery link facility with remote control at helm position
- Battery banks are charged using a voltage sensitive relay that parallels both battery banks when a charging source is present
- 60-amp battery charger charges both banks of batteries via an automatic switch charging system
- 6-amp battery charger for generator battery
- Remote battery master switches with control switch at main switch panel
- Circuit breakers on all circuits
- 12v voltage dropper for certain navigation and radio circuits
- Princess Connect telemetry and maintenance system

220/240 Volt:

- EU specification: 11Kw diesel generator in own sound shield with water cooled specially

- silenced exhaust systems
- US specification: 13.5kW diesel generator in own sound shield with water cooled specially silenced exhaust systems
- Automatic fire extinguisher situated by generator
- 60-amp shore support inlet
- 6-amp battery charger for generator battery
- Generator/shore support change-over switch
- Polarity check system
- Earth leakage safety trip
- Circuit breakers on all circuits
- Power points in: master stateroom, guest cabins, galley and saloon area
- Shaver points in all bathrooms (exc. crew)

FUEL SYSTEM

- Twin fuel tanks (in NS8 marine grade alloy) with interconnection system giving 902 gal / 1083 US gal / 4,100 l capacity
- Fuel fillers on port and starboard side decks
- High-capacity duplex fuel filters with water traps with change-over valves, water warning sensors connected to warning lights at lower helm

- Remote fuel cocks in cockpit locker
- Fuel gauges at main helm console (via MFD)

WATER SYSTEM

- Water tanks totalling 176 gal / 211 US gal / 800 l plus 16 gal / 19 US gal / 73 litres hot water calorifier
- Water heated by engines and 240v immersion heater
- Automatic water pump with filter
- Main circuit breaker at switch panel
- Water level gauge
- Deck filler
- Electric WC system with 60 gal / 72 US gal / 272 l holding tank, content gauge and low noise electric overboard discharge, with macerator backup system as well as dockside discharge system

BILGE PUMPS

- Automatic/manual override electric bilge pumps in engine room (2), rudder area, lazarette and forward accommodation (6 in all)
- High-capacity manual bilge pump with valve

- system and suction points in same areas
- Electric bilge pumps have controls and warning lights at main helm and warning light with audible alarm at Sportbridge helm

FIRE EXTINGUISHERS

- Automatic/manual override fire extinguishers in engine room with warning system at helm position
- Hand-operated fire extinguishers (6) in master stateroom, forward, port and starboard guest cabins, galley and helm position
- Additional extinguisher fitted when optional aft cabin is specified
- Automatic under helm fire extinguisher at lower helm

OTHER STANDARD EQUIPMENT

- Ensign staff
- Fenders (6)
- Mooring warps (4)
- Boat hook
- First-aid kit
- Tool kit

- Owner's manual and engine manual
- Functional bed linen supplied to all cabins (including optional aft cabin when specified)
- Set of glassware (8 settings consisting of tumbler and wine glasses)
- Set of Princess china (8 settings consisting of plate, side plate, bowl, cup & saucer)
- Set of cutlery (8 settings of David Mellor "Paris" cutlery 7 pieces)
- Ship's document case
- Anchor winch back up handle
- S65 canopy badges
- Solid Surface wash basin vanity tops in all bathrooms
- Galley countertop in Solid Surface
- Choice of high-quality carpet and upholstery fabric from extensive range
- Exterior upholstery in white vinyl as standard, with optional upgrade to Comfort Exterior available
- Manual tension venetian blinds (matte black to main deck, grey to lower deck) to all windows
- Optional crew cabin furniture in specified choice of boat timber with timber flooring. Crew bathroom in white laminate with white Solid Surface vanity tops and non-slip (GRP) flooring

FINISHES

- Teak-laid decks to transom platform, transom steps, steps to side decks, cockpit deck, steps to Sportbridge and steps to side decks
- Timber-laid floor to galley, dining area (V-groove planked)
- Furniture in Rovere oak with satin finish as standard. Optional finishes include ash or silver oak with a satin finish or walnut wood in a satin or gloss finish
- Solid Surface floors in all bathroom suites in guest accommodation



S 62



Powerful yet elegant, the S62's sleek exterior styling presents a dynamic, agile stance. With an optimised hull form spearheading her efficiency, her MAN V8 1200 engines mean you can experience speeds up to 38 knots. When at anchor her electro-hydraulic bathing platform creates a convenient launch system for a 3.4m tender, a jet ski, or simply a secluded swimming platform.





Her sociable galley aft arrangement features an open-plan dining area with sliding doors and a fully opening window leading out to the cockpit. Below deck, six guests are comfortably accommodated across an en suite full-beam owner's stateroom and two further guest cabins with the option of an additional crew cabin aft.

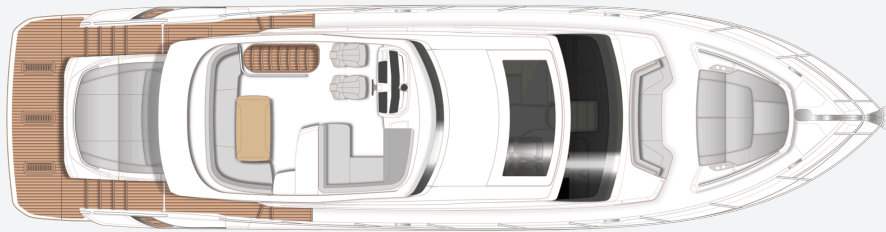




TAKE A VIRTUAL TOUR OF THE S62



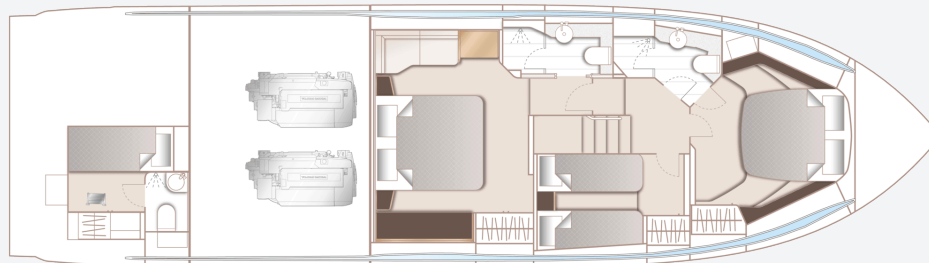
S62
SPECIFICATION



S62 Sportbridge



S62 Main Deck



S62 Lower Deck

PRINCIPAL DIMENSIONS

Length overall (incl. pulpit)	62ft 11in (19.17m)
Length overall (excl. pulpit)	62ft 1in (18.92m)
Beam	16ft 0in (4.87m)
Draft	4ft 9in (1.46m)
Displacement approx.	32,525kg (71,705lbs)*
Fuel capacity	715 gal/858 US gal/ 3,250l
Water capacity (incl. calorifier)	132 gal/159 US gal/ 603l

ENGINES

Twin MAN V8-1200 (2 x 1200hp)	Speed range: 36-38 knots†
--	------------------------------------

FULL SPECIFICATION

DECK FITTINGS

- Teak-laid transom platform, cockpit deck, sportbridge stairway and steps to side deck
- Reversible electric anchor winch with foredeck and helm position controls
- Stemhead roller with automatic anchor launch and retrieve
- Self-stowing (32kg/77lb) Delta anchor with 40m of chain
- Bow rope storage locker
- Freshwater deck/anchor wash
- Walk through coach-roof seating area
- Foredeck sunbathing area
- Deck storage locker for fenders and ropes
- Stainless steel bow, stern and spring cleats (8)
- Stainless steel pulpit and guardrails
- Stainless steel coach-roof handrails
- Foredeck hatch
- PVC rubbing band with stainless steel insert
- LED deck level lighting
- Full set of IMCO navigation lights
- Riding light
- Searchlight with remote control

- Illuminated crown logo to transom
- Twin electric horns
- Fuel and water fillers
- Ensign socket and staff

COCKPIT AND BATHING PLATFORM

- Self-draining
- U-shaped seating/dining area with folding teak table
- Sunbed aft
- LED overhead and deck level lighting
- Stainless steel handrails
- Garage (to take tender up to 3.3m) with electro-hydraulic door and tender launch system with electric winch
- Liferaft stowage locker
- Rope stowage lockers
- Lockable gas strut assisted hatch to lazarette
- Lockable gas strut assisted hatch to lazarette/optional crew cabin
- Lockable gas strut assisted hatch to engine room
- Locker containing remote fuel cocks, manual

- bilge pump with valve chest and manual controls for automatic fire extinguishers
- Twin transom doors leading to bathing platform
- Electro-hydraulic raise/lower teak laid bathing platform (450kg SWL)
- Retractable bathing ladder (manual) in side of hydraulic platform
- Transom steps to access stern from bathing platform when in lowered position
- Hot and cold transom shower
- Marine audio system with radio and streaming capabilities with waterproof speakers
- 220/240v shore support inlet in locker
- Tonneau canvas cover

SPORTBRIDGE

- Twin helm seats with fore and aft adjustment for helmsman
- Instrument console with dual station controls and 9" colour multifunctional display incorporating engine instruments, fuel gauges, alarms and rudder position indicator (see Lower Helm Position)

- 16" colour mfd screen incorporating GPS/ Chartplotter, log and echo sounder
- Adjustable steering wheel
- Drinks holders
- Wetbar with sink, storage, top loading coolbox and optional barbeque
- Aft L-shaped upholstered seating
- Teak folding table
- Upholstered L-shaped companion seating (converts to sunpad)
- Marine audio system with radio and streaming capabilities with waterproof speakers
- Clear view hatch to aft cockpit
- Wind deflector screens
- Stainless steel handrails
- LED deck level lighting
- GRP radar arch
- Matched whip aerials for VHF R/T and radio
- Console and seat covers
- Optional folding bimini with manual/ electro hydraulic operation

HELM POSITION

- Twin helm seats with fore and aft adjustment for helmsman
- Instrument console with dual station controls

- and 9" colour multifunctional display incorporating engine instruments, fuel gauges, alarms and rudder position indicator
- 16" brilliant colour multi-function display incorporating GPS/chartplotter, log and echo sounder
- Dual station instruments and controls at Sportbridge and Lower Helm Positions:
 - power-assisted electro-hydraulic steering
 - adjustable steering wheel
 - rudder position indicator
 - high-speed magnetic compass
 - electronic engine controls
 - trim tab controls with indicators
 - bow thruster control
 - electric anchor winch remote control
 - autopilot
 - VHF with DSC R/T with intercom
 - remote control searchlight
 - horn button
- Drinks holders
- Toughened glass screen (clear for night vision)
- Windscreen wipers with freshwater windscreen wash
- Exterior black mesh windscreen covers
- Bilge pump controls with visual pump running

warnings

- 24v and 240v electrical control panel
- Riding light, helm and navigation light control switches
- USB connection point
- LED overhead lighting (24v) and night lighting
- Electric drop window
- Timber flooring - V grooved planked

SALOON

- U-shaped sofa
- Coffee table
- Sideboard unit with bottle and glass storage
- Refrigerator
- 50" UHD LED TV on rise and fall
- Fusion Apollo MS-RA770 Audio stereo system paired with Focal 100 ICW5 speakers (4)
- Electric drop window to port
- Blinds or sunscreens to all windows and doors
- LED overhead and concealed lighting (24v)
- Access stairway to lower accommodation
- Skylights with reflecto-glass and sliding blinds (option of powered opening roof)
- Fitted carpet

DINING AREA

- L-shaped sofa
- Folding dining table
- Stainless steel framed sliding door to cockpit with integrated hinging window aft of galley
- Blinds or sunscreens to all windows and doors
- LED overhead and concealed lighting (24v)
- Timber flooring (planked)

GALLEY

- Solid surface counter top
- 4-zone ceramic hob
- Extractor fan
- Combination microwave/convection oven with grill
- Stainless steel sink with mixer tap
- Full height fridge/freezer (270l)
- Waste bin
- Drawers and storage cupboards
- Blinds or sunscreens to all windows and doors
- LED overhead and task lighting (24v)
- 220/240v outlets (4)
- Timber flooring (planked)

ACCOMMODATION

- All cabins and bathrooms feature opening portholes
- All cabins feature 220/240v power points
- All bathrooms feature electric freshwater toilets and 240v shaver points

OWNER'S STATEROOM

- Large double bed with drawers below
- Twin bedside tables
- Wardrobes with hanging and drawer storage
- Dressing table
- Mirror
- Sofa
- Storage lockers and drawers
- 43" UHD LED TV
- Fusion MS-RA670 audio system paired with Fusion 6" CL602 (2) speakers
- Panoramic windows including opening porthole
- Curtains or blinds
- LED overhead and concealed lighting (24v)
- Individual berth lights
- 220/240v outlets (2)
- USB charging point
- Fitted carpet

EN-SUITE BATHROOM

- Wash basin with solid surface counter top
- Mirror
- Storage lockers
- Shower compartment with automatic pump out
- Extractor fan
- Window with opening porthole
- Manual tension venetian blind
- LED overhead and concealed lighting (24v)
- Bathroom accessories
- Solid surface flooring

FORWARD STATEROOM

- Large double bed with drawers below
- Wardrobe with shelves
- Dressing table
- Mirror
- Storage lockers
- Window with opening porthole
- Manual tension venetian blind
- Deck hatch
- LED overhead and concealed lighting (24v)
- Individual berth lights
- 220/240v outlets (2)
- USB charging point
- Fitted carpet

EN-SUITE BATHROOM

- Wash basin with solid surface counter top
- Mirror
- Storage lockers
- Shower compartment with automatic pump out
- Extractor fan
- Window with opening porthole
- Manual tension venetian blind
- LED overhead and concealed lighting (24v)
- Bathroom accessories
- Solid surface flooring
- Access door from passageway

STARBOARD GUEST CABIN

- Two single beds with drawers below (with option of double bed conversion)
- Bedside table
- Wardrobe with shelves
- Mirror
- Storage lockers and drawers
- Window with opening porthole
- Manual tension venetian blind
- LED overhead and concealed lighting (24v)
- Individual berth lights
- 220/240v outlets (2)
- USB charging point

- Fitted carpet

OPTIONAL CREW CABIN (IN PLACE OF AFT LAZARETTE)

- Single bed with storage below
- Wardrobe with shelf
- Mirror
- Wash basin with solid surface counter top
- Storage lockers
- Opening porthole
- LED overhead lighting (24v)
- Individual berth light
- 220/240v outlet (1)
- Non-slip safety flooring

EN-SUITE BATHROOM

- Shower with automatic pump out
- Extractor fan
- LED overhead lighting (24v)
- Bathroom accessories

POWER AND DRIVE SYSTEMS

- 5-bladed propellers in nickel aluminium bronze
- Bow thruster (130kgf/287lbf) with dual-station controls
- Engine room lighting

- Engine room access hatch and ladder
- Power-assisted electro-hydraulic steering system
- Trim tabs with indicators
- Electronic engine and gear shift controls
- Engine room extractor fan with electronic time delay
- Fresh water supply point in engine room
- Dripless self-aligning shaft seals

ELECTRICAL SYSTEMS

24 Volt:

- 4 x heavy duty batteries for engine starting
- 4 x heavy duty auxiliary batteries
- 1 x generator battery
- Battery link facility with remote control at helm position
- Both battery banks are charged using a voltage sensitive relay that parallels both battery banks when a charging source is present
- 60 amp battery charger charges both banks of batteries via an automatic switch charging system
- Remote battery master switches with control switch at main switch panel
- Circuit breakers on all circuits

- 12v voltage dropper for certain navigation and radio circuits

220/240 Volt:

- 11Kw diesel generator in own sound shield with water cooled specially silenced exhaust
- Automatic fire extinguisher situated by generator
- 50 amp shore support inlet
- Generator/shore support change-over switch
- Polarity check system
- Earth leakage safety trip
- Circuit breakers on all circuits
- Power points in: owner's stateroom, guest cabins, galley and saloon area
- Shaver points in all bathrooms

FUEL SYSTEM

- Twin fuel tanks (in NS8 marine grade alloy) with interconnection system giving 715 gal / 858 US gal / 3,250l
- Fuel fillers on port and starboard side decks
- High-capacity duplex fuel filters with water traps with change-over valves, water warning sensors connected to warning lights at lower helm

- Remote fuel cocks in cockpit locker
- Fuel gauges at main helm console

WATER SYSTEM

- Water tanks totalling 116 gal / 159 US gal / 530l plus 16 gal / 19 US gal / 73l hot water calorifier
- Water heated by engines and 240v immersion heater
- Automatic water pump with filter
- Main circuit breaker at switch panel
- Water level gauge
- Deck filler
- Electric freshwater toilet system with 55 gal / 66 US gal / 250l holding tank, content gauge and low noise manual overboard discharge, with macerator backup system as well as dockside discharge system

FIRE EXTINGUISHERS

- Automatic/manual override fire extinguishers in engine room with warning system at helm position
- Hand-operated fire extinguishers (5) in owner's stateroom, forward and starboard guest cabins, galley and helm position
- Additional extinguisher fitted when optional aft

cabin is specified

BILGE PUMPS

- Automatic/manual override electric bilge pumps in engine room (2), rudder area, lazarette and forward accommodation (6 in all)
- High-capacity manual bilge pump with valve system and suction points in same areas
- Electric bilge pumps have controls and warning lights at main helm and warning light with audible alarm at sportbridge helm

OTHER STANDARD EQUIPMENT

- Ensign staff
- Fenders (6)
- Mooring warps (4)
- Boat hook
- First-aid kit
- Tool kit
- Owner's manual and engine manual
- Quilted bed covers supplied to all cabins (except optional crew cabin)
- Ship's document case
- Anchor winch back up handle

FINISHES

- Teak-laid decks to transom platform, steps to side decks, cockpit deck steps to sportbridge, sportbridge and steps to side decks
- Timber-laid floor to galley and dining area, planked
- Furniture in Rovere oak with satin finish as standard. Optional finishes include ash or silver oak with a satin finish or walnut wood in a satin or gloss finish
- Solid surface floors in all bathroom suites in guest accommodation
- Solid surface counter tops in all bathroom suites in guest accommodation
- Galley counter top in solid surface
- Choice of high-quality carpet and upholstery fabric from extensive range
- Blinds or sunscreens to all windows and portholes
- Optional crew cabin has non-slip safety flooring, crew bathroom has white solid surface counter tops



SAFEGUARDING YOUR SANCTUARY

Your yacht is your haven, so the wellbeing of you and your family is of upmost importance to us. That's why we offer the option of the 'Princess Lifeline' powered by MedAire. A 24/7 SOS service providing access to medical and security assistance. One phone call connects you to MedAire's team of over 200 global security experts and 80,000 accredited medical providers who can assist you in the event of a medical or travel safety emergency. You can relax on board knowing everything is taken care of.



OUR PARTNERS

Princess is proud to partner with a few exclusive brands who share our vision and brand values, and deliver exceptional experiences to their customers.



To celebrate our 50th anniversary, **SEABOB** created a Limited Edition collection which was the start of a unique relationship with this successful marine brand. The success of our 50th anniversary limited edition SEABOB marked the start of a unique relationship with this successful marine brand. We have since collaborated on a collection of limited edition designs as the perfect complement to your Princess yacht.



As we evolve our technology offering on each and every Princess, our partnership with **NAIM** provides world class audio visual systems that continue to rewrite the audiophile rule book.



Princess was honoured to become the first luxury yacht manufacturer to officially collaborate with **The Marine Conservation Society**. It's our way to support and sustain marine ecology, securing an environment for future generations to discover and explore.



With a shared passion for sustainability and ocean conservation, we recently partnered with **Ecoworks Marine** to help tackle the challenge of creating a more environmentally friendly approach to yacht cleaning. In a first for the industry, Ecoworks Marine have developed their 'Preserve the Living Seas' range, a unique collection of cleaning products that are fully biorenewable, quickly biodegradable and sustainably formulated.



Williams Jet Tenders are our provider of choice, with every Princess yacht designed to accommodate the models in their range.



We are proud partners of the **Salcombe Distilling Company**. Inspired by the coastal vitality of Salcombe and its shipbuilding heritage, Salcombe Distilling Co. creates exceptional spirits at its waterside distillery on Island Street, Salcombe; one of the world's only distilleries directly accessible by boat. The partnership will see Princess Yachts and Salcombe Distilling Co. collaborate at events around the world.



RECOGNITIONS

Our priority is to be considered the best by our owners, but recognition by independent experts through a number of prestigious awards has given Princess and our craftspeople a tremendous sense of pride.



Oceanway China Yacht Awards

Best of the Year 24-30m Superyacht
Most Popular Award 24-30m
X95
2022

Oceanway China Yacht Awards

Best Layout 60-80ft motor yacht
Y72
2022

Oceanway China Yacht Awards

Best Layout 45-60ft motor yacht
F45
2022

Motor Boat Awards

Best Flybridge over 60ft
Y72
2022

Robb Report

Best of the Best Yacht
X95
2021

IBI Boat Builder Awards

Best Apprenticeship Scheme
Princess Royal Training Award
Apprentice Scheme
2020

World Yachts Trophies

Best Shipyard
2019

The Sunday Times Profit Track 100

Best Brand Award
Princess Yachts Limited
2019

Motor Boat Awards

Best Flybridge up to 60ft
F55
2019

Asia Pacific Boating Awards

Best Yacht Design Innovation
R35
2019

IBI Boat Builder Awards

Retail Marketing Initiative
R35 Communications
Campaign
2018

World Yachts Trophies - Yachts France

Best Layout 45-62'
F55
2018

Asia Boating Award

Best Sports cruiser over 55ft
V65

Asia Boating Awards

Best Sports cruiser up to 45ft
V40
2017

Motor Boat Awards

Sports cruiser over 45ft
V58
2017

Motor Boat Awards

Flybridge over 55ft
75 Motor Yacht
2017

World Superyacht Awards

Semi-Displacement & Planing
Two Deck Motor Yacht
Anthea 35M
2016

Asia Boating Awards

Best Production Motor Yacht (15m-24m)
75 Motor Yacht
2016

Motor Boat Awards

Best Flybridge up to 60ft
F45
2022

YACHT STYLE Awards

Sport Yacht 21-24m
Princess S72
2024



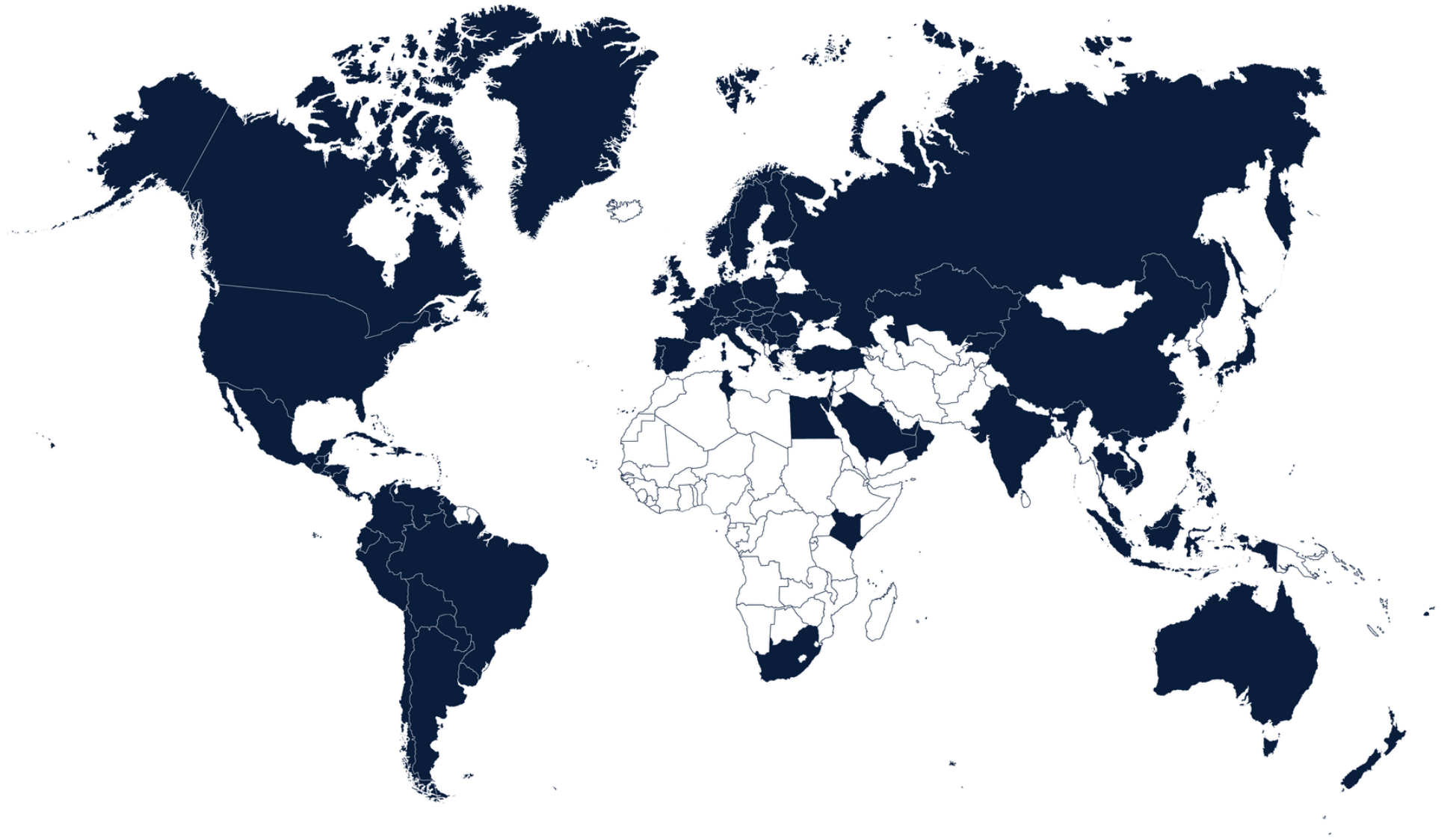
DISTRIBUTOR
NETWORK



With an extensive network of distributors around the globe, we are able to bring you personalised world-class service almost anywhere. We do all that we can to make sure that the process of buying a Princess is yet another exciting aspect of ownership.

Our specialist dealers have years of experience and unparalleled knowledge of our yachts. For more information on any one of the yachts in our range, please contact your local Princess office. Address and contact details can be found on our [**website**](#).

GLOBAL COVERAGE





FURTHER DETAILS

STYLING AND ACCESSORIES
SUPPLIED BY KIND PERMISSION
OF:

Anna New York
Cristal et Bronze
Cub-ar
Diptyque
Gio Bagnara
Luxury Living
Pickett
Staub
Stelton
Zwilling

PHOTOGRAPHY:

Mike Evans
Quin Bisset
George Edwards





Version 2.0

Updated May 2022

* Displacements are calculated with 50% fuel and water with liferaft but with no optional equipment fitted or other gear.

† Maximum speeds will vary depending on cleanliness of hull, condition of sterngear, loading of craft, water and air temperatures, sea conditions and other factors. Speed estimates are therefore given in good faith but without warranty or liability on the part of Princess Yachts Limited. Craft illustrated in this brochure may be fitted with certain optional equipment. Specifications may be changed at any time without notice or liability.

‡ Certain specifications, which vary by model, are upgraded on Princess yachts built for use in North America. Thus, specifications and equipment will vary from the information listed in the brochure for North American Princess yachts (e.g. air-conditioning and an upgraded generator will be included as standard for all North American models and electric cooking facilities will be supplied in place of gas systems). Please consult the USA Specification Brochure for full details regarding the North American specifications for individual models.



THANK YOU

For more information or to find a distributor,
please visit our [website](#).