

M8

SAVORING
ART DE VIVRE



PRESTIGE

// New dimensions
in comfort //

M8

THE MULTIHULL BY PRESTIGE : SAVOR THE LUXURY OF SPACE

Exterior space 145 m² / 1 561 Sq ft

New dimensions in comfort

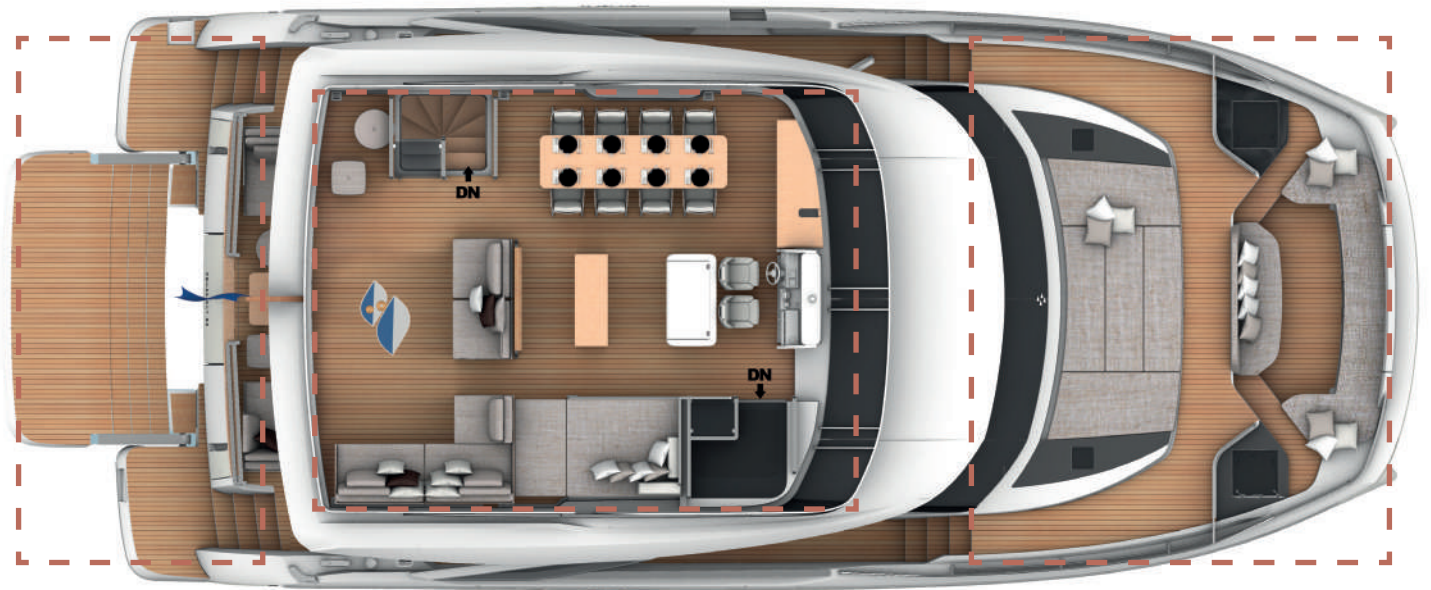
PRESTIGE has created a revolutionary new multihull platform for unrivalled space onboard.

By extending the motor yacht's architecture to two hulls, you benefit from 20% more space on board than on a traditional monohull of equal length.

The M8 reveals generous, brightly lit, and refined living spaces, affording the ultimate in comfort.

It promises life in harmony with the sea and at a gentle pace.

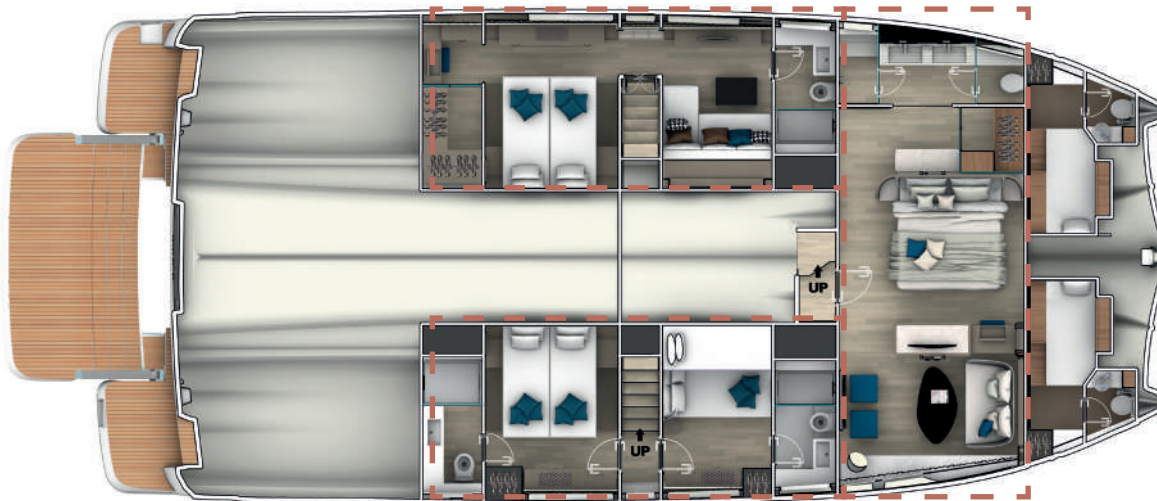
Reconnect with nature and with yourself.



Interior space 130 m² / 1 399 Sq ft



50 m²
538 Sq ft



80 m²
861 Sq ft

PRELIMINARY TECHNICAL DATA

Overall length / Longueur hors tout	65'	19,82 m
Overall beam / Bau maxi	29'	8,85 m
Light displacement / Déplacement lège	90 584 Lbs	41 120 kg
Fuel capacity / Capacité carburant	979 US gal	3 700 l
Water capacity / Capacité eau	212 US gal	800 l
Accommodation / Couchages	8 / 10 + 2	
Category / Catégorie (Certification pending / Certification en cours)	A - 10 / B - 12 / C - 16 / D - 20	
Engine	VOLVO 2 x D8-600 HP	
Designers / Architectes	Garroni Design - Marc Lombard - Valentina Militerno De Romedis	

Connected boat technology. Equipped with **sea@apps**
CONNECT YOUR BOAT FREE YOUR MIND

// A real well-being
on board //

M8



Well-being is essential

Two hulls provide natural stability and excellent handling at sea, contributing to your comfort and well-being on board.

Enjoy smooth, serene cruising aboard your M8 yacht.

Savor precious moment at sea.

Gentle pace has virtues

The catamaran hull design guarantees reduced fuel consumption and affords greater range and autonomy.

The carbon emissions are reduced, and cruising is more respectful of the environment.

The M8 enables you to experience a new Art de Vivre in harmony with the sea.



“ A catamaran is the place where sky and sea meet and merge themselves: this is where the inspiration for the color palette and the concept comes from... Miami! ”

Valentina MILITERNO DE ROMEDIS

M8

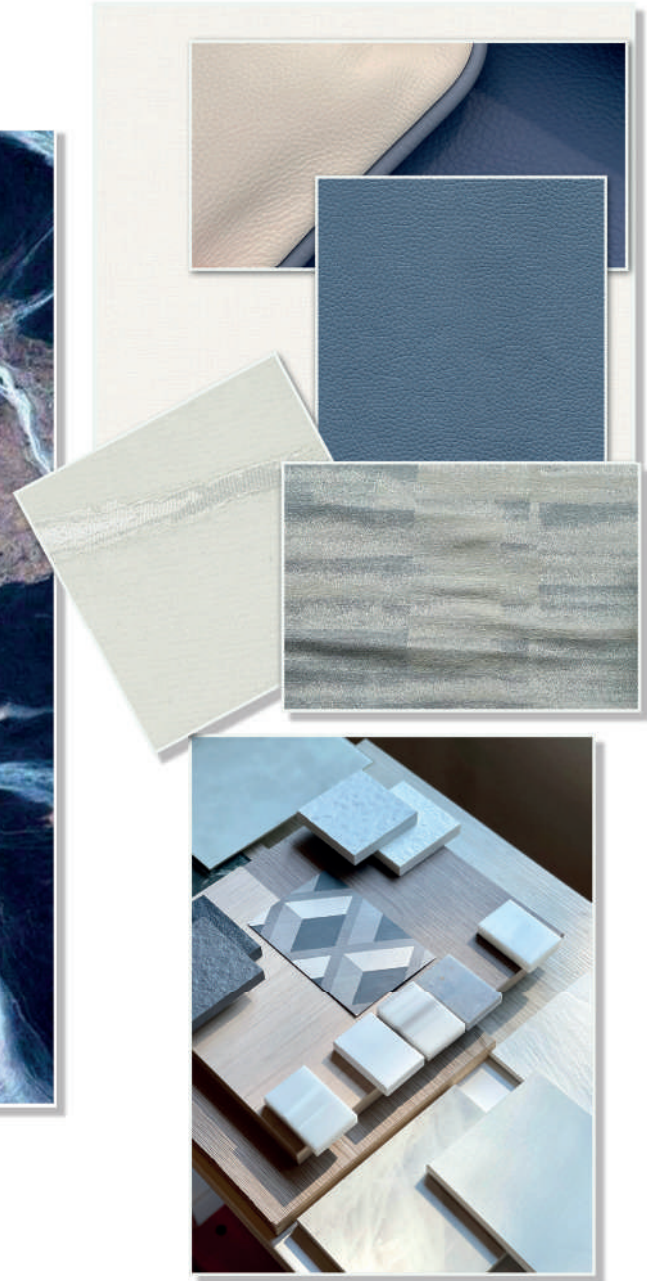
Natural luxury

Experienced designers work for environmental sustainability while developing a multitude of options for customization.



R O D A





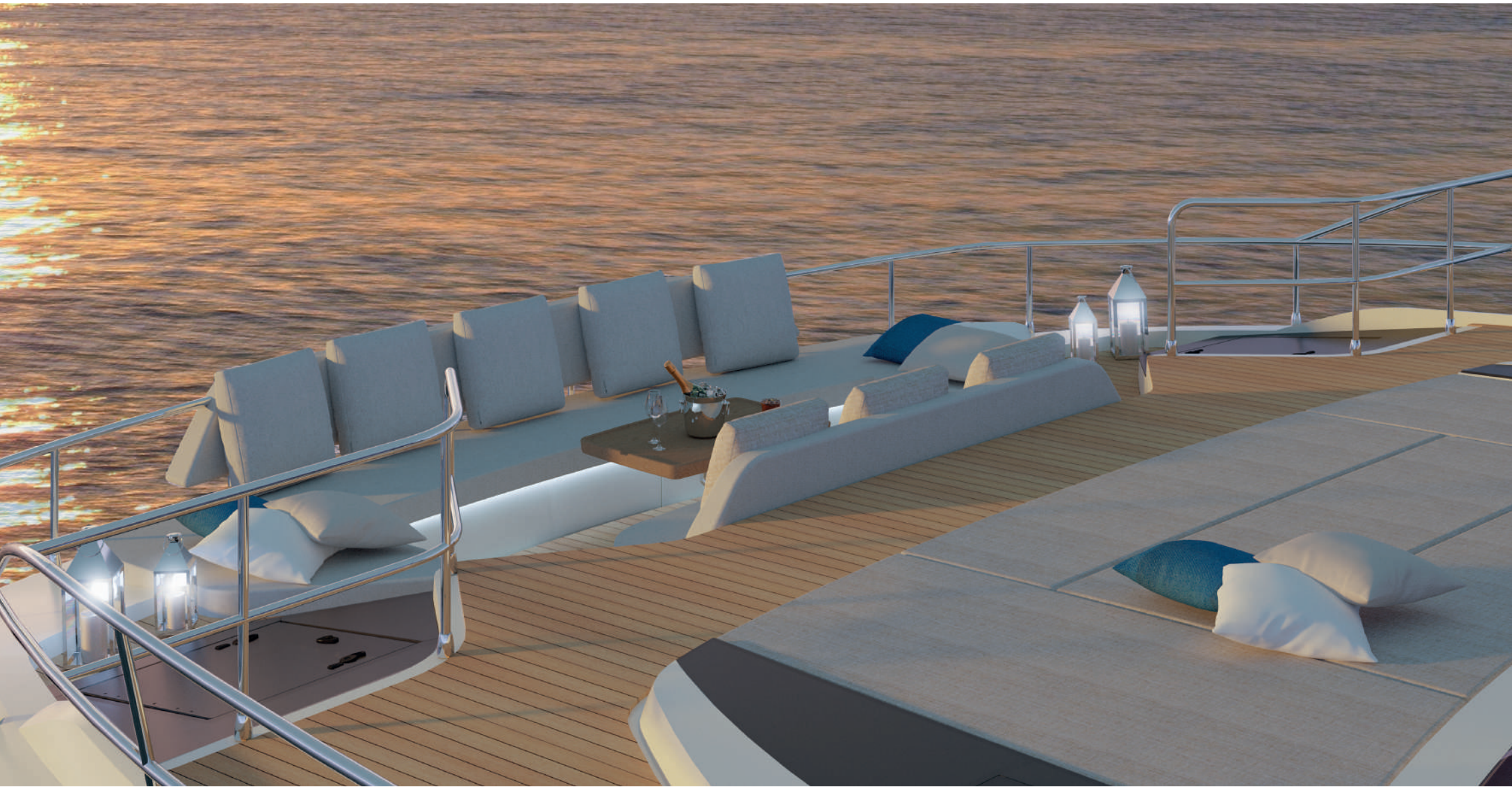
M8

DESIGN PORTFOLIO

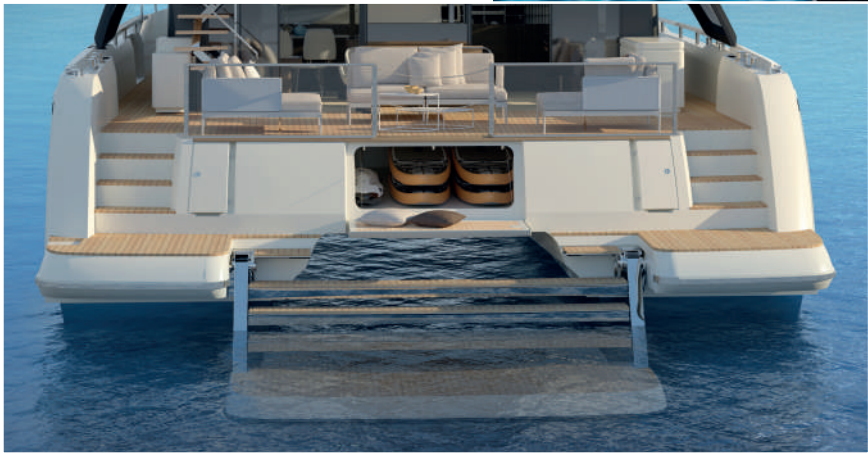
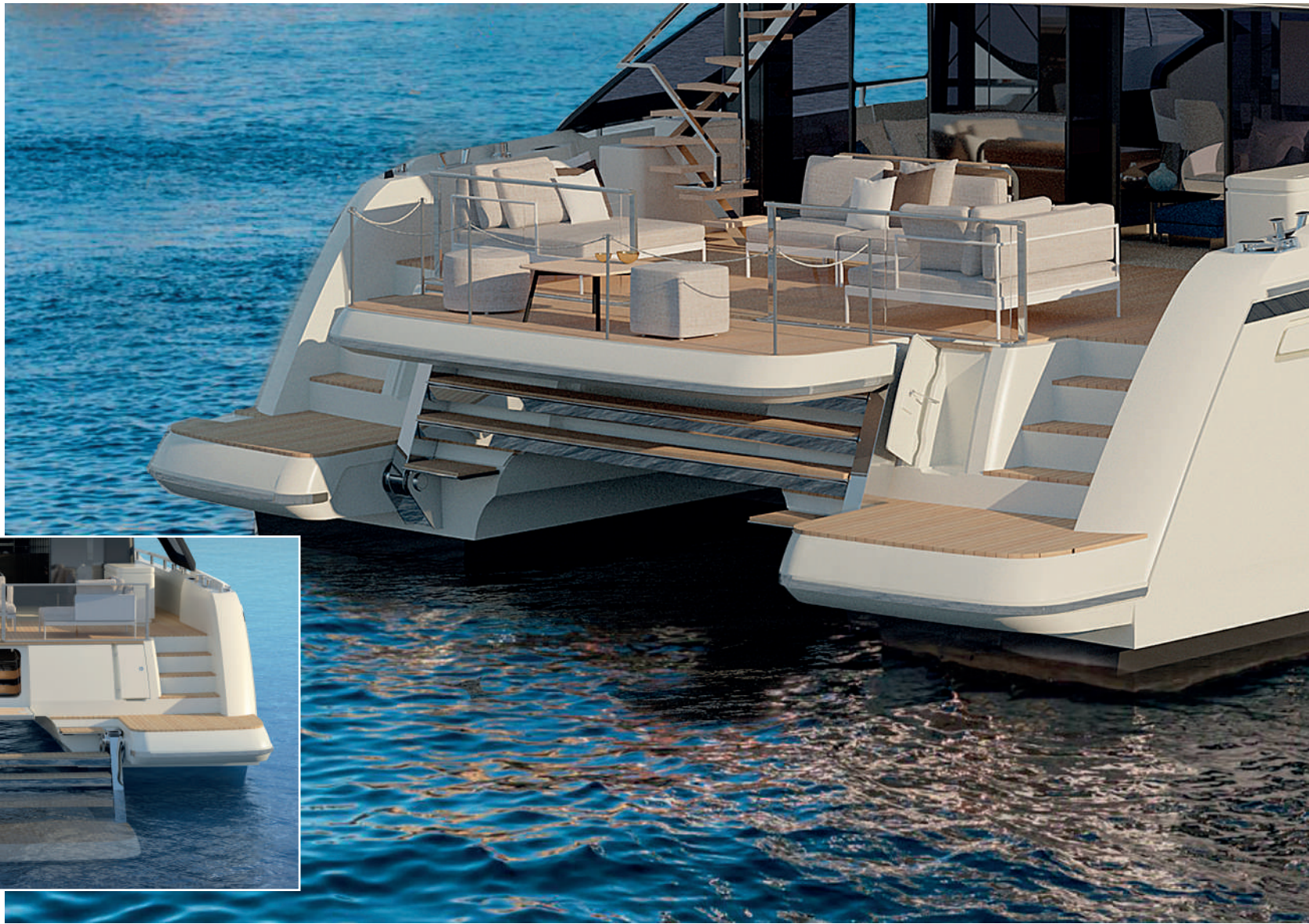
Wide and sleek













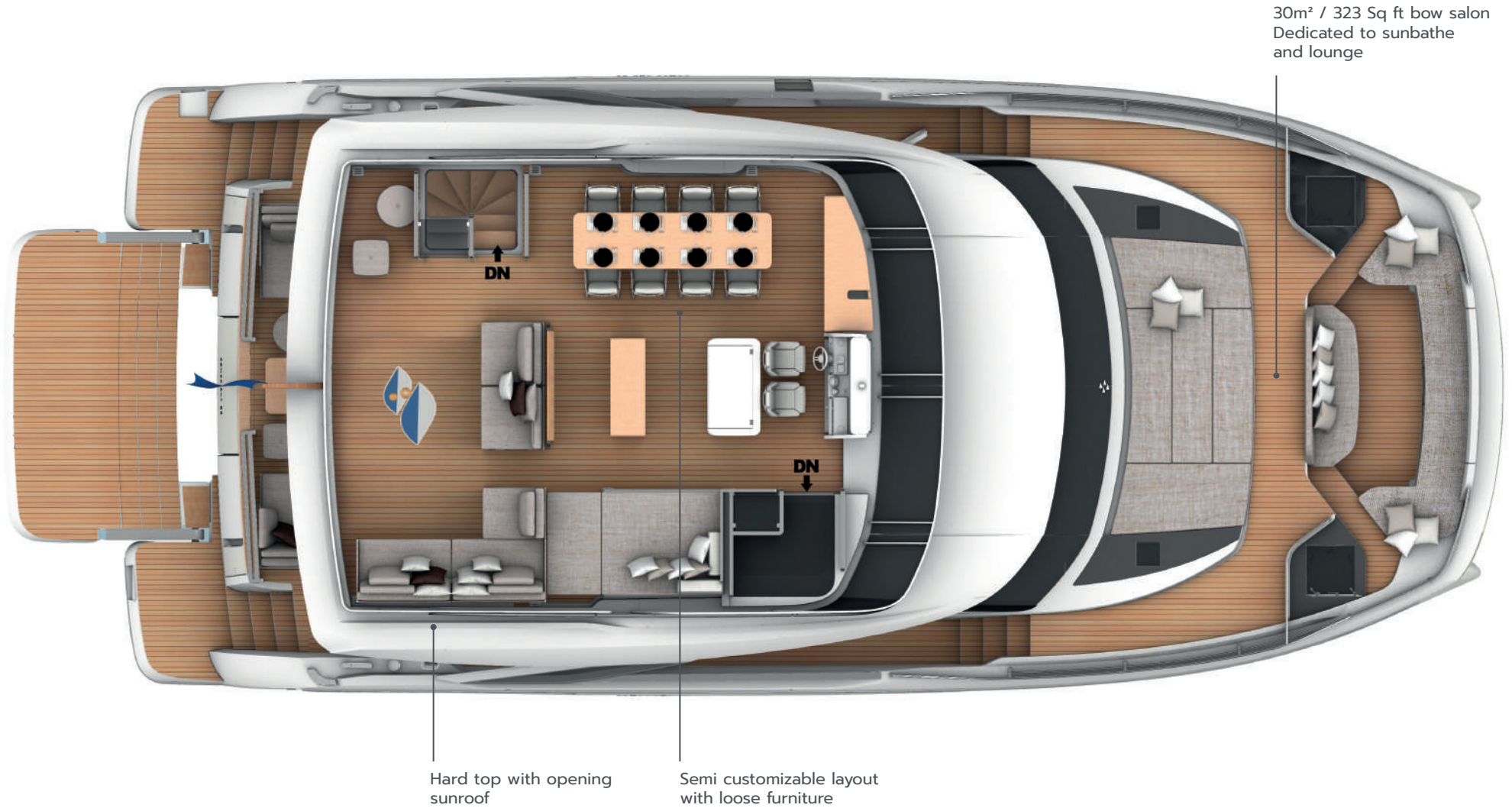






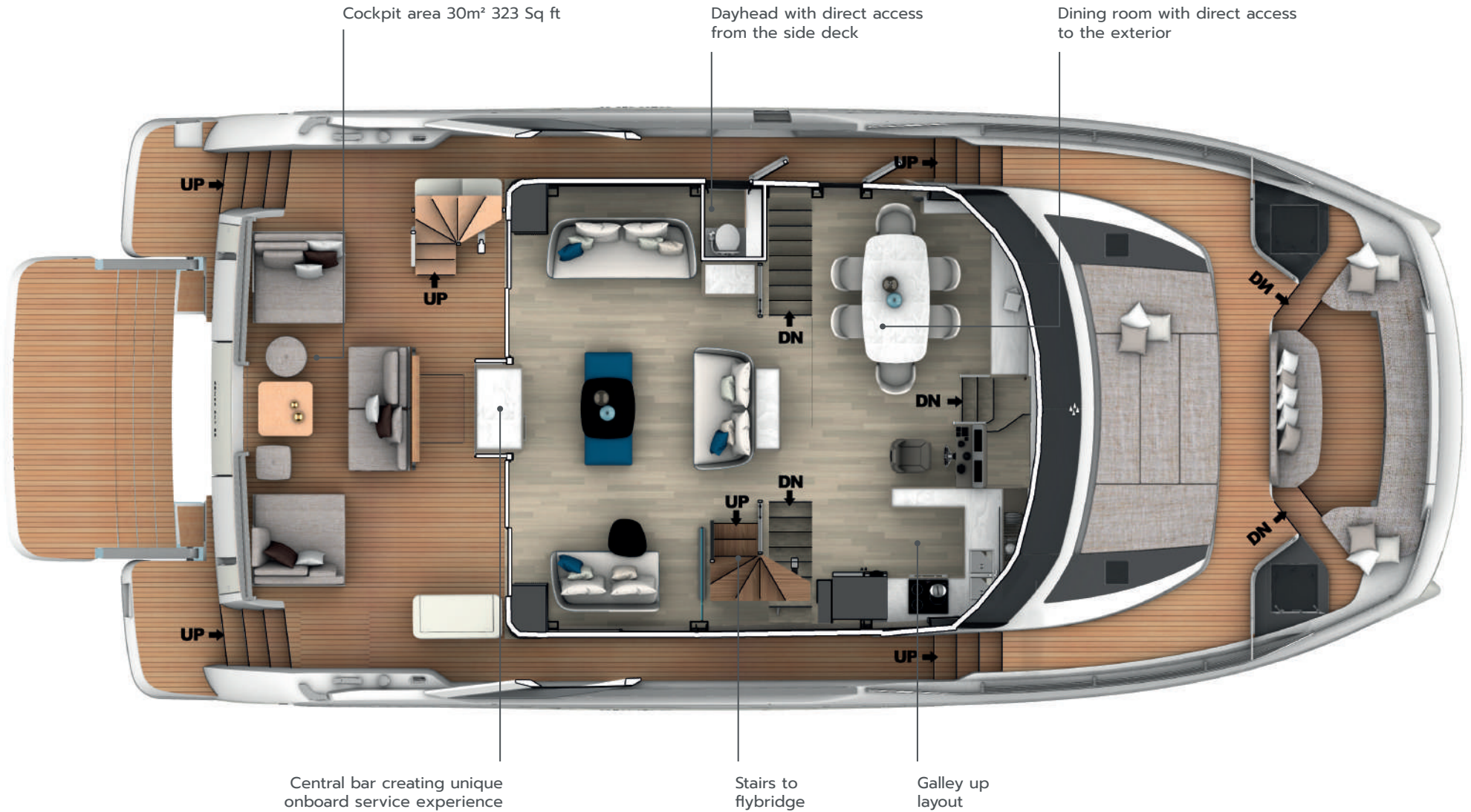


Additional 50m² / 538 Sq ft of living space on the flybridge



Galley up layout

Unrivalled space onboard



Galley down layout 110 m² / 1184 Sq ft

One-level floor throughout
Multi-direction circulation
Infinity perception

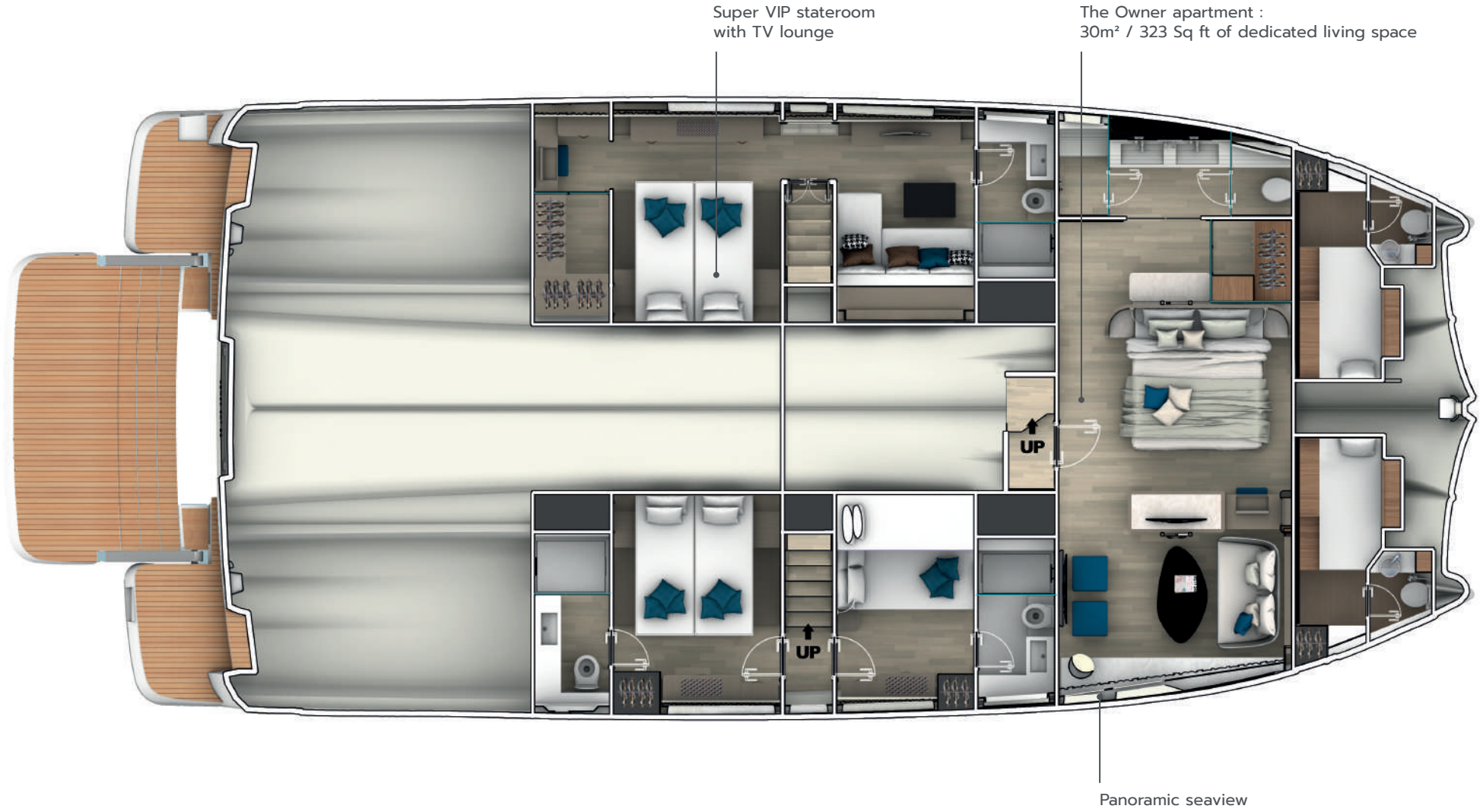
|| Unrivalled space onboard ||



Galley up layout

4 staterooms, 4 bathrooms, 2 crew cabins

Unrivalled space onboard



Galley down layout

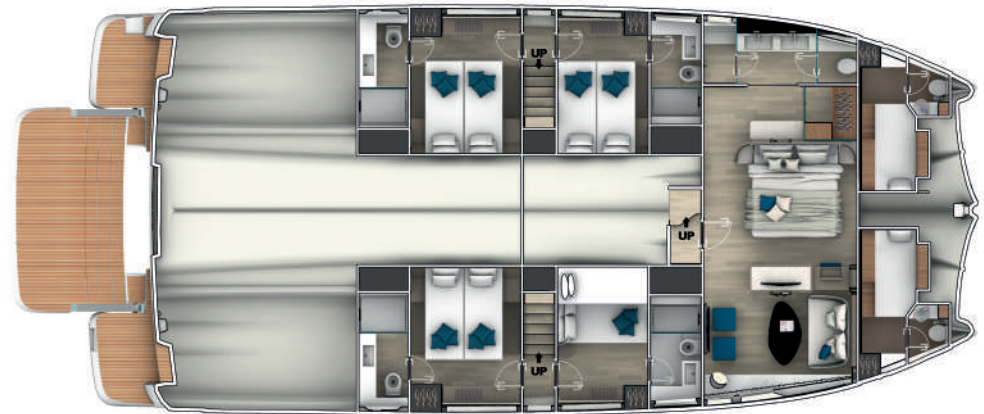
4 staterooms, 4 bathrooms, 2 crew cabins



Galley down with crew dinette

Galley up layout

5 staterooms, 5 bathrooms, 2 crew cabins





TECHNICAL DATA ACCORDING TO ISO 9001 (QUALITY PRODUCTION) AND ISO 14001 (ENVIRONMENTAL MANAGEMENT SYSTEM). EVERY EFFORT AS BEEN MADE TO ENSURE THAT FACTS, PHOTOS AND FIGURES ARE CORRECT AT THE TIME OF PUBLICATION.

PRESTIGE RESERVES THE RIGHT TO MAKE CHANGES WITHOUT PRIOR NOTICE. BOATS SHOWN IN THIS BROCHURE MAY BE FITTED WITH OPTIONAL EQUIPMENT.

LES MODÈLES PHOTOGRAPHIÉS NE SONT PAS CONTRACTUELS ET PEUVENT ÊTRE PRÉSENTÉS AVEC DES OPTIONS. LES DÉCORATIONS INTÉRIEURES ET EXTÉRIEURES AINSI QUE LES ÉQUIPEMENTS DIVERS PEUVENT ÊTRE MODIFIÉS SANS PRÉAVIS.

PHOTOGRAPHS OF THESE PRESENTED MODELS ARE NOT CONTRACTUALLY BINDING, AND MAY INCLUDE OPTIONAL EQUIPMENT. INTERIOR AND EXTERIOR DECORATION AS WELL AS EQUIPMENT MAY BE MODIFIED WITHOUT PRIOR NOTICE.

www.prestige-yachts.com

SPBI - S.A. au capital de 51.541.628 € - Siège social : Parc d'activités de l'Eraudière - 34 rue Eric Tabarly - 85170 Dompierre-sur-Yon
RCS 491 372 702 - La Roche-sur-Yon