

MARITIMO X-SERIES
SPORTS MOTOR YACHT

Maritimo®





A LEGACY OF INNOVATION

At Maritimo we will never submit to the status quo. As innovators, we challenge conventional wisdom to manifest new ideas. We see every detail as an opportunity for excellence, and we take no short cuts in our quest to create the extraordinary.

Maritimo's new X-Series is a symphonic blend of functionality dressed in powerful form that re-imagines the traditional idea of the conventional sport yacht concept. The result is nothing less than spectacular.

With its innovative aft cabin, the X-Series is a world first in its class, fusing Maritimo's trademark performance pedigree, bespoke materials and cutting-edge design to create unparalleled boating luxury. This re-envisioned motor yacht announces the new generation of Maritimo design and is an exciting prelude of things to come.

THE ULTIMATE ENTERTAINER

The Maritimo X-Series aft cabin gives owners a new level of customization. With options designed to cater to a range of needs, it is offered in three distinct configurations: a 'beach club', an expansive tender garage or an additional stateroom.

Revolutionizing on-water entertaining, the game changing new 'beach club' design flows effortlessly into all areas of the boat, creating constant connections between guests and the sea.

Alternatively, the aft cabin can be used as a fourth cabin with the comfort of an additional stateroom and private ensuite. Enjoy three-sided panoramic ocean views and the ability to transform the swim platform into a makeshift balcony deck with fingertip control from your bedside.





AN OPEN PLAN SALOON THAT ELEVATES ANY OCCASION

Expansive sliding windows and optional twin sunroofs open to fresh ocean air and endless vistas of the water and skies.

Here, the galley flows seamlessly into the cockpit when entertaining, or forward to the lounging and dining area when relaxing. With a bespoke island bench centrepiece and customizable appliance configurations, this is a beautifully appointed space to share.

DESIGN GENETICS

Built in Australia by leading craftsmen, each distinctive sport yacht is of the highest calibre. Stemming from its illustrious Maritimo bloodline, the new X-Series inherits the timeless elegance and unparalleled abilities in the water of its long range motor yacht predecessors.

Underneath the hand-crafted wood, fine leather and clever ergonomics you will find superior nautical design that provides simplicity, efficiency and cruisability. Whether you prefer days of deep-water action or island hopping weekend entertainment, Maritimo's racing edge and high performance ensure the X-Series is ready for any adventure.





X60

With its unrivalled performance, premium materials, ground-breaking design and cutting-edge technology, the X60 is unprecedented in luxury and form.



The X60 has been designed to create a sense of openness and tranquillity. Light floods in from generous windows and onto natural timber and stone, polished and refined to a luxurious finish. The result is an opulent haven on the water.



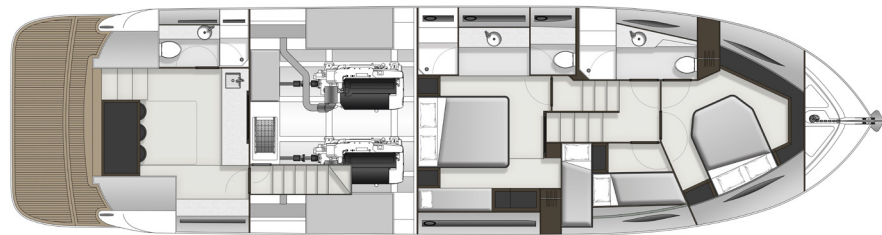


The broad range of accommodation options on the X60 are normally only available on much larger yachts. A spacious full-beam master bedroom can be complemented by a VIP suite, a bunk room, or a generous aft cabin.

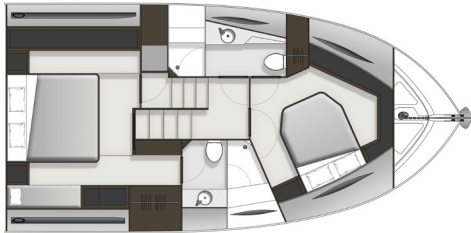
X60 SPECIFICATIONS

| | | |
|-----------------------|----------------------|---------------|
| LENGTH OVERALL | 19.42 M | 63' 9" FT |
| HULL LENGTH ISO | 18.21 M | 59' 9" FT |
| BEAM | 5.21 M | 17' 1" FT |
| DRAFT | 1.57 M | 5'2" FT |
| DRY WEIGHT | 30,500 KG | 67,240 LBS |
| FUEL CAPACITY | 4,300 L | 1,135 US GAL |
| WATER CAPACITY | 800 L | 211 US GAL |
| HOLDING TANK CAPACITY | 300 L | 80 US GAL |
| SLEEPING CABINS | 3 STANDARD | 4 OPTIONAL |
| SLEEPING CAPACITY | 8 STANDARD | 8 OPTIONAL |
| ENGINES (STANDARD) | 2 x D13 800 HP VOLVO | |
| GENERATOR | CUMMINS - ONAN | 21.5 kW 60 Hz |

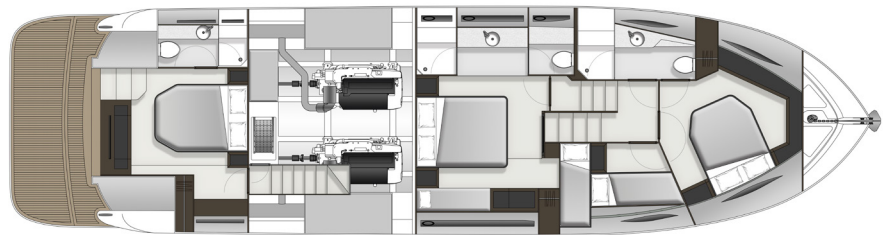
GENERAL ARRANGEMENT : BEACH CLUB



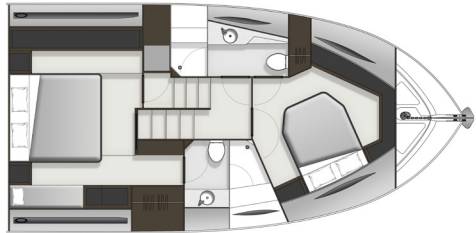
Regency Suite
Option



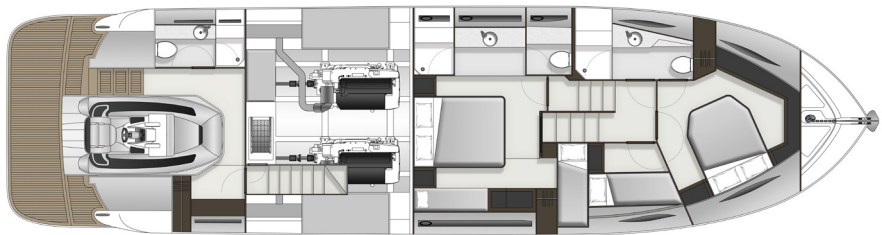
GENERAL ARRANGEMENT : QUEEN AFT CABIN



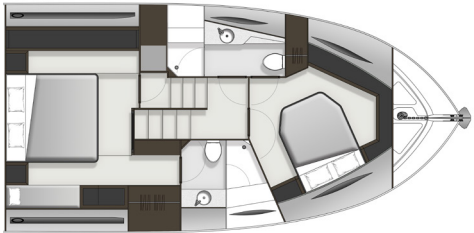
Regency Suite
Option



GENERAL ARRANGEMENT : TENDER GARAGE



Regency Suite
Option





X50

The X50 is a world-class leader in performance, speed, cruising capability and fuel economy. The exterior has been designed with careful consideration to drag reduction, creating maximum efficiency from the hull profile and allowing the X50 to reach speeds around 36 knots.



Like its larger sibling the X50 has been designed to create a sense of openness and tranquillity. The saloon design incorporates optional three stage sliding vista windows that flank each side of the hard top letting in unprecedented amounts of light and ventilation when needed. An optional sunroof centered over the galley provides the ability to lighten and ventilate the saloon.



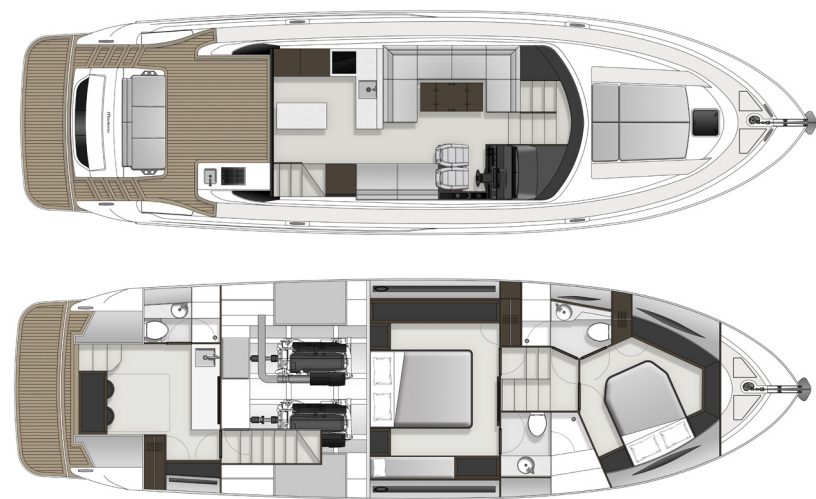


The X50 offers two large staterooms and ensuite in the forward accommodations, a large full beam master stateroom with ensuite, and the spacious aft cabin beach club and ensuite that doubles as additional stateroom with hideaway bed. All enabling both ultimate adventure and ultimate comfort.

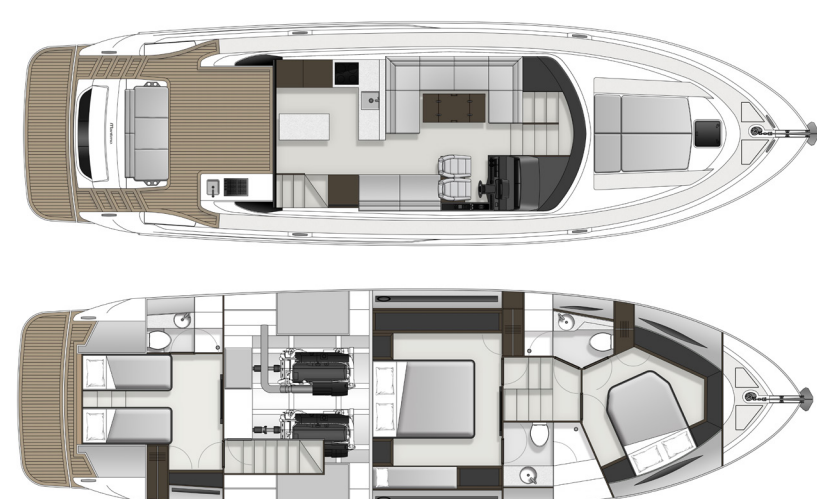
X50 SPECIFICATIONS

| | | |
|-----------------------|-----------------------|--------------|
| LENGTH OVERALL | 16.00 M | 52' 7" FT |
| HULL LENGTH ISO | 15.17 M | 49' 9" FT |
| BEAM | 4.55 M | 14' 11" FT |
| DRAFT | 1.48 M | 4' 10" FT |
| DRY WEIGHT | 19,000 KG | 41,887 LBS |
| FUEL CAPACITY | 2900 L | 766 US GAL |
| WATER CAPACITY | 500 L | 132 US GAL |
| HOLDING TANK CAPACITY | 200 L | 53 US GAL |
| SLEEPING CABINS | 2 STANDARD | 3 OPTIONAL |
| SLEEPING CAPACITY | 4 STANDARD | 6 OPTIONAL |
| ENGINES (STANDARD) | 2 x VOLVO D11-670 MHP | |
| GENERATOR | CUMMINS - ONAN | 13.5 kW 60Hz |

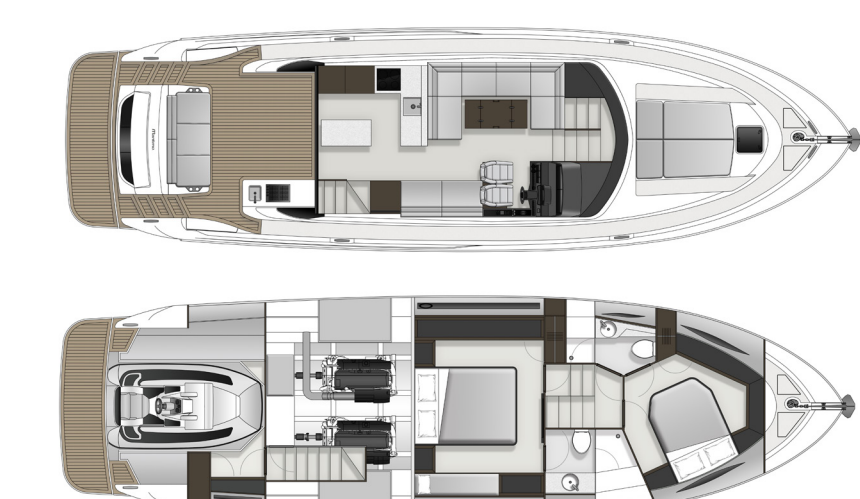
GENERAL ARRANGEMENT : BEACH CLUB



GENERAL ARRANGEMENT : TWIN AFT CABIN



GENERAL ARRANGEMENT : TENDER GARAGE





X-SERIES COMPARISON

| | X60 | | X50 | |
|-----------------------|------------------------------|--------------|-----------------------------|------------|
| LENGTH OVERALL | 19.42 M | 63' 9" FT | 16.00 M | 52' 7" FT |
| HULL LENGTH ISO | 18.21 M | 59' 9" FT | 15.17 M | 49' 9" FT |
| BEAM | 5.21 M | 17' 1" FT | 4.55 M | 14' 11" FT |
| DRAFT | 1.57 M | 5' 2" FT | 1.48 M | 4' 10" FT |
| DRY WEIGHT | 30,500 KG | 67,240 LBS | 19,000 KG | 41,887 LBS |
| FUEL CAPACITY | 4,300 L | 1,135 US GAL | 2900 L | 766 US GAL |
| WATER CAPACITY | 800 L | 211 US GAL | 500 L | 132 US GAL |
| HOLDING TANK CAPACITY | 300 L | 80 US GAL | 200 L | 53 US GAL |
| SLEEPING CABINS | 3 STANDARD | 4 OPTIONAL | 2 STANDARD | 3 OPTIONAL |
| SLEEPING CAPACITY | 8 STANDARD | 8 OPTIONAL | 4 STANDARD | 6 OPTIONAL |
| ENGINES (STANDARD) | 2 x D13 800 HP VOLVO | | 2 x VOLVO D11-670 MHP | |
| GENERATOR | CUMMINS - ONAN 21.5 kW 60 Hz | | CUMMINS - ONAN 13.5 kW 60Hz | |

THE WORLD OF MARITIMO



MARITIMO MUSTERS & EVENTS

As a proud Maritimo owner, become part of our story at one of our Maritimo Musters held around the world. Meet new friends, speak to our team about how each and every model is built, while your driving skills are put to the test.

Extend beyond the pleasurable days out on the water with our range of exclusive benefits. From special VIP events across the world, the chance to be part of product development and ‘experience days’ with our brand partners, there’s plenty to be involved in.



GLOBAL BOAT SHOWS

Experiencing a Maritimo has never been easier with our dedication to an international boat show schedule across Australia, the Americas and Europe. This is an opportunity for you to be informed and entertained on Maritimo’s latest models. Visit our website and social channels to find a boat show near you.

maritimo.com.au

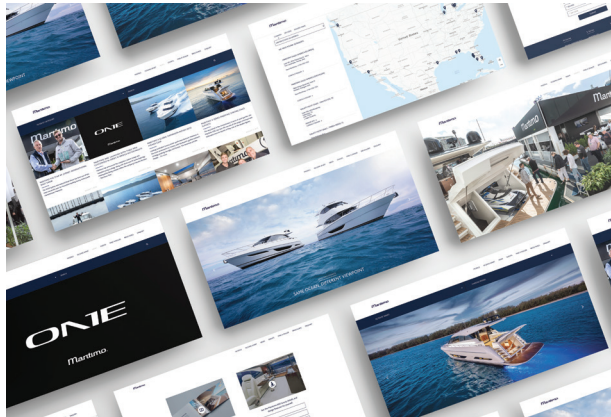


MARITIMO COLLECTION

Your motor yacht is just the beginning. The latest Maritimo Collection is now available for you to discover.

Meticulous attention to detail doesn't stop with our motoryachts. You’ll find the same level of craftsmanship in our clothing. Partnering with Henri Lloyd, we have produced a range of premium clothing that is not only stylish but practical. So whether you’re shopping for yourself or a loved one, you know the quality is assured.

The Maritimo Collection includes ladies and gents clothing as well as a range of bags and accessories. Visit our online shop at shop.maritimo.com.au.



CONNECT WITH MARITIMO

Maritimo's digital world offers you the opportunity to connect with us. Our website, Facebook, Instagram, Twitter, Linkedin and YouTube channels are filled with the latest Maritimo news, events and models, plus insights into the factory and offshore racing.

maritimo.com.au | [@maritimooftshore](https://www.instagram.com/maritimooftshore)



DISCLAIMER

Maritimo (MFG) International Pty Ltd is constantly seeking ways to improve the specifications, designs and production of its motoryachts and enhancements take place continually. Whilst every effort is made to ensure up to date literature, this brochure should not be regarded as an infallible guide to current specifications.

Always check with your authorised Maritimo consultant to ensure you have the latest specifications, options and pricing. We reserve the right to change specifications, fittings, inventory and prices without notice.

© Copyright September 2018
Maritimo (MFG) International Pty Ltd

RACE BRED ENGINEERING

With a heritage in offshore racing, Maritimo provides world-class technology that excites all true boating enthusiasts with no compromise on luxury.

At 175mph, there is no such thing as over engineering. Intelligent weight distribution, light weight durable materials, precision components and full power steering creates smooth, exact and responsive performance.

Maritimo has been at the leading edge of offshore racing both in Australia and internationally and with these credentials no other manufacturer can match the technology and performance built into every Maritimo.



Maritimo®