

MARITIMO M-SERIES
FLYBRIDGE MOTOR YACHT

Maritimo®







LUXURY AND PERFORMANCE IN PERFECT HARMONY

Built in Australia by the finest craftsman, Maritimo blends its race honed performance pedigree with Australia's easy living approach to create luxury boating with rugged blue water credentials.

We are dedicated to crafting distinctive high quality motoryachts that are thoughtfully laid out and luxuriously finished. Each offers its owner timeless elegance and unparalleled abilities in the water.

Maritimo®

DESIGN THAT ENSURES SIMPLICITY, EFFICIENCY AND CRUISABILITY

The Maritimo S-Series offers a sleek, low slung sedan exterior style ideal for height constricted waterways. The all-in-one interior layout is suited to those who prefer the bridge integrated on a single level with the lounge and entertaining area.

The hand crafted wood, fine leather and clever ergonomics combines effortlessly with the best in nautical design to ensure efficiency, comfort and cruisability.

When it's time for deep-water action you'll find Maritimo's racing edge more than meets the demands of the sports fisherman and high performance island-hopping adventure.

AFT GALLEY

Whether you're entertaining in the cockpit or saloon, the chef remains part of the conversation with Maritimo's aft galley arrangement and wide opening bi-fold doors. Fitted out with Miele appliances, including a full stand up dishwasher, speed oven, cook top with range hood and refrigerator with in-built ice maker, the aft galley will surprise and delight.

FULL BEAM MASTER CABIN

Every Maritimo S-Series motor yacht provides a full beam master cabin with king or queen size bed, ensuite and chaise lounge.





BI-FOLD DOORS

Unique bi-fold doors open up the whole living space in to one large entertaining area. Entertaining is a breeze with the galley as the centre of the action and the island bench doubling as a cocktail bar. For those cooler days or to access the cockpit while running, you only need open one port side door.



WIDE WALK AROUND DECKS

The walk around side decks of a Maritimo allow safe and easy access to the foredeck, perfect for children and pets. Whether you're pulling up a mooring, dropping anchor, tying up at a wharf, getting the lines and fenders ready, or for those who like to wet a line, you'll wonder how you ever managed without them.



EASY HANDLING AND BERTHING

Maritimo's ergonomic dashboards feature the latest large screen electronics and intuitively configured controls for easy handling. They can be fitted with optional docking thrusters to aid berthing and vessel control in tight confined canal type waterways or crowded marinas. Key engine controls are also replicated in the aft cockpit for simpler docking.



EFFICIENT RACE BRED SHAFT DRIVE

Smart, innovative, practical design lies at the heart of the Maritimo philosophy. Big ideas – such as the low angle race bred shaft drive and our patented hand laid super strong hull – ensure best-in-class efficiency and excellent sea going abilities. Instantly sighted fuel gauges and a simple, concise electrical panel layout, makes everyday boat management and long distance performance cruising straightforward and safe.







S70

SINGLE LEVEL PENTHOUSE ON THE OCEAN

The sleek new Maritimo S70 sedan cruiser is the largest single level vessel that Maritimo has created. Boasting a top speed of almost 30 knots and offering exceptional handling, it is a superb fusion of style and performance in one generously proportioned motor yacht.

**IN EVERY DETAIL, THIS IS A MOTOR
YACHT DESIGNED FOR EXTENDED TRIPS
IN LUXURY AND COMFORT, WITH A
RANGE OF 520 NAUTICAL MILES AT
21 KNOTS AND A STAGGERING 1,600
NAUTICAL MILES AT NINE KNOTS.**

The Maritimo S70 has been crafted to pass under low clearances such as the fixed bridges of America's Great Loop and Australia's Gold Coast waterways. And the ability to add fuel tanks ensures that the adventure possibilities are endless.

This is a motor yacht with a strong focus on mobility, from the wide, walk-around decks to the bi-fold doors and spacious cockpit. From the helm, the Maritimo S70 offers 360-degree sightlines, a two-metre wide sunroof and captain's door access to the foredeck, creating a sense of openness when out on the water and docking. The Maritimo S70 is also an extremely nimble boat for its size with the two-and-a-half turn, lock-to-lock steering system. This combination of single deck design and extreme manoeuvrability means that steering is a delight, allowing you to take in stunning views during your adventures around the world.

The sedan configuration of this beamy vessel keeps everyone on one level, with multiple entertaining and living spaces and additional height in the main cabin. This expansive design and single level living sits seamlessly with the flat running angle of the motor yacht.

The Maritimo S70 houses four cabins including the Maritimo hallmark — a full beam, apartment-sized master cabin. Three additional bedrooms and three bathrooms, ensures there is room for everyone to unwind in peace. Ergonomics and thoughtful design have been incorporated to create a saloon area that is expansive and flexible. Configuration options include tub chairs, lounge or bar stools, providing a leisure area that is beautiful in both style and function.

The wide galley has enough storage to incorporate a coffee machine, ice maker or wine cooler, ensuring easy entertaining options. While Miele appliances are standard, there is also the option to customise appliances, sound systems and a range of other features to create the ultimate home on the water.

The Maritimo S70 has all the elements of a single level penthouse on the ocean: expansive spaces, opulent materials and brilliant design.

With Maritimo, your luxury home is wherever your course takes you.





S70 SPECIFICATIONS

LENGTH OVERALL	21.51 M	70' 7" FT
HULL LENGTH ISO	21.21 M	69' 7" FT
BEAM	5.72 M	18' 9" FT
DRAFT	1.5 M	4' 11" FT
DRY WEIGHT	42,000 KG	92,600 LBS
FUEL CAPACITY	6,300 L	1,664 US GAL
WATER CAPACITY	1,400 L	370 US GAL
HOLDING TANK CAPACITY	400 L	105 US GAL
SLEEPING CABINS	4 STANDARD	
SLEEPING CAPACITY	8 STANDARD	12 OPTIONAL
ENGINES (STANDARD)	2 x VOLVO D13 - 900 MHP ZF	
GENERATOR	CUMMINS - ONAN 29 kW 60Hz	







S59

STRIKING LOOKS AND PHENOMENAL PERFORMANCE

A combination of sleek styling and contemporary functionality make the all new Maritimo S59 the new must-have motor yacht. Designed to be the ultimate driving and entertaining experience, this beautiful vessel has it all.

**THE MARITIMO S59 IS A BROAD-BEAMED,
SINGLE-LEVEL, THREE-CABIN,
TWO-BATHROOM MOTOR YACHT THAT
COMBINES TIMELESS CRAFTSMANSHIP
WITH SUPREME PERFORMANCE.**

The low height provides easy navigation, enabling owners access to endless waterways. At the same time, single-level skippering merges all the benefits of entertaining with an effortless driving experience. The cockpit, featuring a raked back windscreen, is accessible from both sides of the Maritimo S59 with optional openings to the hydraulic swim platform. Raised seating behind the helm means friends and family can revel in the high performance driving action. The Maritimo S59 features a full-beam master cabin – a hallmark of the Maritimo range – a VIP cabin, and a third bunk cabin. The elegantly designed walk-around deck provides ample space to relax or unwind with friends in spectacular surrounds.

As well as the wide-beam design, the Maritimo S59 features a large lazarette, similar to the larger M64 cruising motor yacht. The stern of the boat provides expansive storage spaces with room for a tender and enough water toys to keep every guest occupied for hours. The substantial 5.36 metre beam ensures owners don't have to compromise on the luxury of space within a deceptively trim design.

Encapsulating all the superior engineering that Maritimo is famous for, the Maritimo S59 provides breathtaking performance with low trim and shallow draft, ensuring a clean, intelligent driving experience. Maritimo's race proven shaft drive technology reduces fuel consumption and gives peace of mind with lower maintenance costs and increased longevity of ownership. The long-range fuel capability and exceptional cruising speed enables owners to choose their next adventure with confidence.

Whether it is a day trip or island hopping with friends, this premium crowd pleaser makes the ocean your perfect playground.





S59 SPECIFICATIONS

LENGTH OVERALL	18.07 M	59'3" FT
HULL LENGTH ISO	17.72 M	58'2" FT
BEAM	5.46 M	17' 11" FT
DRAFT	1.3 M	4'3" FT
DRY WEIGHT	28,000 KG	61,730 LBS
FUEL CAPACITY	4,500 L	1,188 US GAL
WATER CAPACITY	900 L	237 US GAL
HOLDING TANK CAPACITY	300 L	79 US GAL
SLEEPING CABINS	3 STANDARD	
SLEEPING CAPACITY	6 STANDARD	
ENGINES (STANDARD)	2 x VOLVO D13 - 800 MHP TD	
GENERATOR	CUMMINS - ONAN 21.5 kW 60HZ	







S51

A FRESH LOOK AT WHAT'S POSSIBLE WITHIN A COMPACT MOTOR YACHT

The Maritimo S51 embodies everything that the Maritimo approach to motor yacht design makes possible. Stylish and spacious this magnificent 51 footer provides all the facilities and benefits of our larger vessels in a more compact single level package.

**SIMPLE IDEAS THAT ARE OFTEN OVERLOOKED
MAKE ALL THE DIFFERENCE - SAFE, WIDE, WALK
AROUND DECKS AND AFT BI-FOLD DOORS TO
THE REAR COCKPIT, WHICH TOGETHER WITH A
GENEROUSLY PROPORTIONED AFT GALLEY AND
THE COMBINED SALOON AND BRIDGE AMPLIFY
YOUR LIVING SPACE.**



Everywhere you look you'll find smart thinking that makes the most of every space. Ideas such as the electrically operated lazarette hatch in the cockpit (optional) which provides a large under deck area for a tender or water sports equipment. There's an easily accessible lazarette that can be fitted with large freezer, under floor fish bins, and optional live bait tanks to go along with the optional fishing transom.

When it's time for action, Maritimo's hull design and race-bred direct shaft drive create a boat with superb balance, poise and fuel efficiency. A unique approach which results in a rugged, yet easy to handle, 1340 horsepower powerhouse perfectly equipped to indulge your desire for fun and luxury.

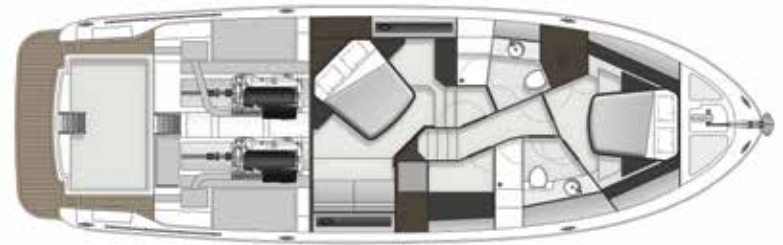
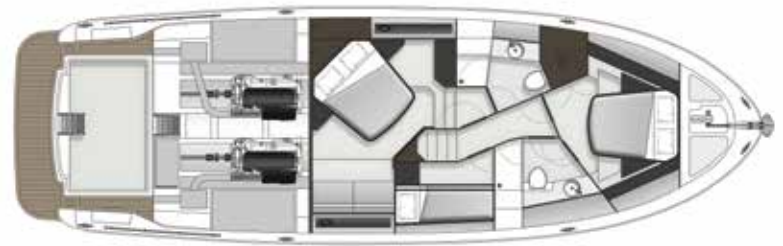






S51 SPECIFICATIONS

LENGTH OVERALL	16.19 M	53' 1" FT
HULL LENGTH ISO	15.92 M	52' 3" FT
BEAM	5.06 M	16' 7" FT
DRAFT	1.28 M	4' 2" FT
DRY WEIGHT	20,500 KG	45,200 LBS
FUEL CAPACITY	3,100 L	818 US GAL
WATER CAPACITY	500 L	132 US GAL
HOLDING TANK CAPACITY	200 L	53 US GAL
SLEEPING CABINS	3 STANDARD	
SLEEPING CAPACITY	5 STANDARD	
ENGINES (STANDARD)	2 x VOLVO D11 - 670 MHP	
GENERATOR	CUMMINS - ONAN 13.5 kW 60HZ	



Utility room option



THE CHOICE IS YOURS

THE MARITIMO S-SERIES OFFERS YOU A RANGE OF GREAT OPTIONS AND FLEXIBILITY TO PERSONALISE YOUR MOTOR YACHT.

Maritimo make it easy through a logical series of steps to make your motor yacht a true expression of your individuality. You have a number of choices: from selecting your engines to exterior and interior colours, finishes and those detailed touches that define your character.



1

STEP 1

CHOOSE YOUR MODEL

Compare the standard features of each S-Series model and choose the one that best suits your lifestyle.

2

STEP 2

CHOOSE YOUR ENGINE

Most models offer a choice of powerful engines.

3

STEP 3

CHOOSE YOUR COLOUR

There's a wide range of possibilities for your hull colour to individualise your vessel.

4

STEP 4

CHOOSE YOUR INTERIOR

Personalise your own interior space from a carefully selected range of finishes and furnishings.

5

STEP 5

CHOOSE YOUR ACCESSORIES

Enhance your Maritimo further from our range of genuine accessories.

S-SERIES COMPARISON

	S70		S59		S51	
LENGTH OVERALL	21.51 M	70' 7" FT	18.07 M	59'3" FT	16.19 M	53' 1" FT
HULL LENGTH ISO	21.21 M	69' 7" FT	17.72 M	58'2" FT	15.92 M	52' 3" FT
BEAM	5.72 M	18' 9" FT	5.46 M	17' 11" FT	5.06 M	16' 7" FT
DRAFT	1.5 M	5' FT	1.3 M	4'3" FT	1.28 M	4' 2" FT
DRY WEIGHT	42,000 KG	92,600 LBS	28,000 KG	61,730 LBS	20,500 KG	45,200 LBS
FUEL CAPACITY	6,300 L	1,664 US GAL	4,500 L	1,188 US GAL	3,100 L	818 US GAL
WATER CAPACITY	1,400 L	370 US GAL	900 L	237 US GAL	500 L	132 US GAL
HOLDING TANK CAPACITY	400 L	106 US GAL	300 L	79 US GAL	200 L	53 US GAL
SLEEPING CABINS	4 STANDARD		3 STANDARD		3 STANDARD	
SLEEPING CAPACITY	8 STANDARD	12 OPTIONAL	6 STANDARD		5 STANDARD	
ENGINES (STANDARD)	2 x VOLVO D13 - 900 MHP		2 x VOLVO D13 - 800 MHP		2 x VOLVO D11 - 670 MHP	
GENERATOR	CUMMINS - ONAN 29 kW 60Hz		CUMMINS - ONAN 21.5 kW 60HZ		CUMMINS - ONAN 13.5 kW 60HZ	



RACE BRED ENGINEERING

With a heritage in offshore racing, Maritimo provides world-class technology that excites all true boating enthusiasts with no compromise on luxury.

At 175mph, there is no such thing as over engineering. Intelligent weight distribution, light weight durable materials, precision components and full power steering creates smooth, exact and responsive performance.

Maritimo has been at the leading edge of offshore racing both in Australia and internationally and with these credentials no other manufacturer can match the technology and performance built into every Maritimo.





THE WORLD OF MARITIMO



MARITIMO MUSTERS & EVENTS

As a proud Maritimo owner, become part of our story at one of our Maritimo Musters held around the world. Meet new friends, speak to our team about how each and every model is built, while your driving skills are put to the test.

Extend beyond the pleasurable days out on the water with our range of exclusive benefits. From special VIP events across the world, the chance to be part of product development and 'experience days' with our brand partners, there's plenty to be involved in.



GLOBAL BOAT SHOWS

Experiencing a Maritimo has never been easier with our dedication to an international boat show schedule across Australia, the Americas and Europe. This is an opportunity for you to be informed and entertained on Maritimo's latest models. Visit our website and social channels to find a boat show near you.
maritimo.com.au

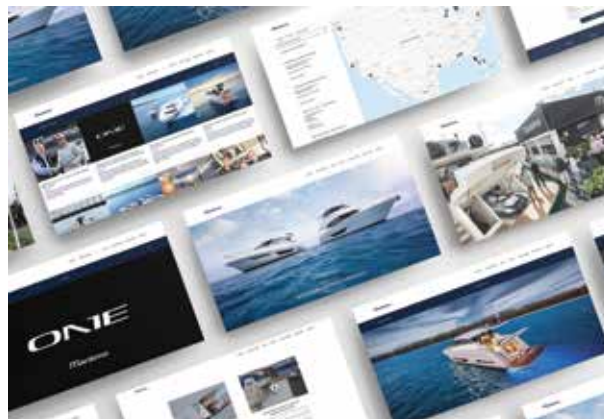


MARITIMO COLLECTION

Your motor yacht is just the beginning. The latest Maritimo Collection is now available for you to discover.

Meticulous attention to detail doesn't stop with our motoryachts. You'll find the same level of craftsmanship in our clothing. Partnering with Henri Lloyd, we have produced a range of premium clothing that is not only stylish but practical. So whether you're shopping for yourself or a loved one, you know the quality is assured.

The Maritimo Collection includes ladies and gents clothing as well as a range of bags and accessories. Visit our online shop at shop.maritimo.com.au.



CONNECT WITH MARITIMO

Maritimo's digital world offers you the opportunity to connect with us. Our website, Facebook, Instagram, Twitter, LinkedIn and YouTube channels are filled with the latest Maritimo news, events and models, plus insights into the factory and offshore racing.

maritimo.com.au | [@maritimooftshore](https://www.instagram.com/maritimooftshore)



DISCLAIMER

Maritimo (MFG) International Pty Ltd is constantly seeking ways to improve the specifications, designs and production of its motoryachts and enhancements take place continually. Whilst every effort is made to ensure up to date literature, this brochure should not be regarded as an infallible guide to current specifications.

Always check with your authorised Maritimo consultant to ensure you have the latest specifications, options and pricing. We reserve the right to change specifications, fittings, inventory and prices without notice.

© Copyright August 2019
Maritimo (MFG) International Pty Ltd

Maritimo®