

MARITIMO M-SERIES
FLYBRIDGE MOTOR YACHT

Maritimo®







LUXURY AND PERFORMANCE IN PERFECT HARMONY

Built in Australia by the finest craftsman, Maritimo blends its race honed performance pedigree with Australia's easy living approach to create luxury boating with rugged blue water credentials.

We are dedicated to crafting distinctive high quality motoryachts that are thoughtfully laid out and luxuriously finished. Each offers its owner timeless elegance and unparalleled abilities in the water.

Maritimo®

DESIGN THAT ENSURES SIMPLICITY, EFFICIENCY AND CRUISABILITY

Underneath the hand crafted wood, fine leather and clever ergonomics, you'll find the best in nautical design that ensures simplicity, efficiency and cruisability.

We take a fresh approach to luxury, creating beautifully finished generous apartment-like interior spaces ideal for both relaxed on-board family living and more formal entertaining.

When it's time for deep-water action you'll find Maritimo's racing edge more than meets the demands of the sports fisherman and high performance island-hopping adventure.

INTERNAL STAIRCASE

Stylish finely crafted timber and stainless steel internal staircases keep everyone safe and dry in rough weather.

FULL BEAM MASTER CABIN

Every Maritimo M-Series motor yacht provides a full beam master cabin with king or queen size bed, ensuite and chaise lounge.





AFT GALLEY

Whether you're entertaining in the cockpit or saloon the chef remains part of the conversation with Maritimo's aft galley arrangement and wide opening bi-fold doors. Fitout with Miele appliances including a full stand up dishwasher, speed oven cook top with range hood, and refrigerator with in-built ice maker.



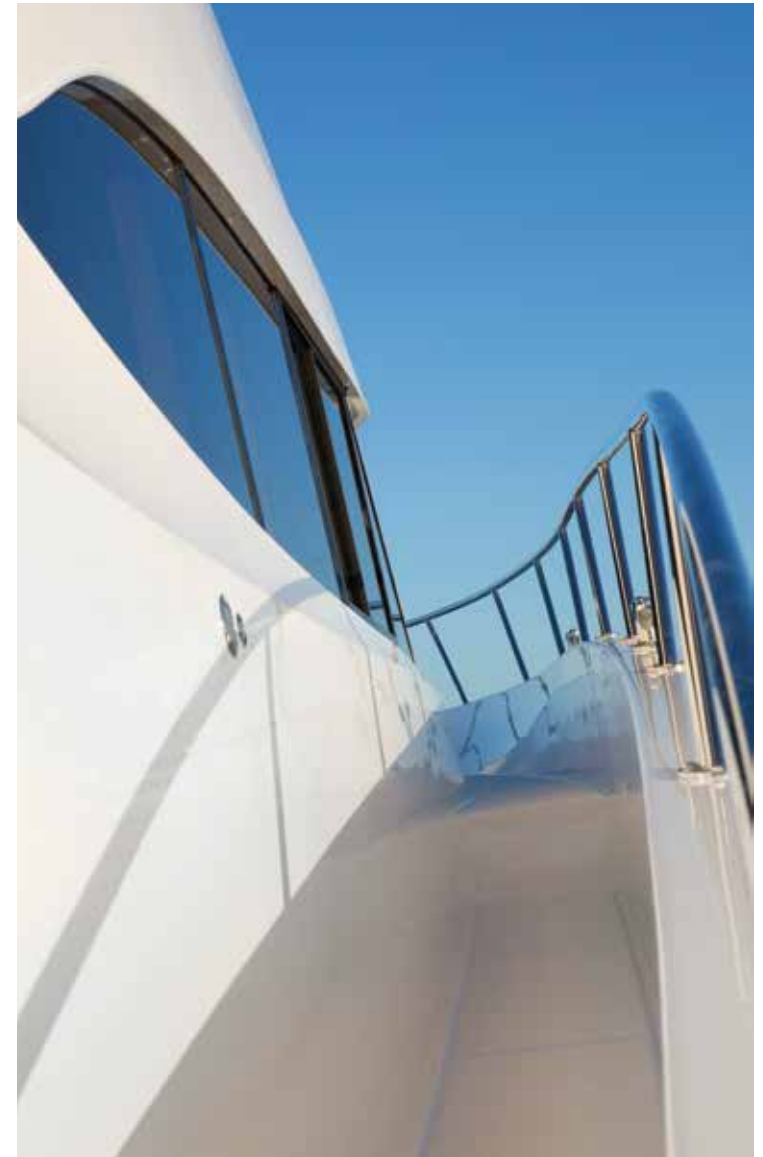
BI-FOLD DOORS

Unique bi-fold doors open up the whole living space into one large entertaining area. Entertaining is a breeze with the galley as the centre of the action and the island bench doubling as a cocktail bar. For those cooler days or to access the cockpit while running, you only need open one port side door.



WALK AROUND DECKS

The walk around side decks of a Maritimo allow safe and easy access to the foredeck, perfect for children and pets. Whether you're pulling up a mooring or dropping anchor, tying up at a wharf, getting the lines and fenders ready, or for those who like to wet a line, you'll wonder how you ever managed without them.



EASY HANDLING AND BERTHING

Maritimo's ergonomic dashboards feature the latest large screen electronics and intuitively configured controls for easy handling. They can be fitted with optional docking thrusters to aid berthing and vessel control in tight confined canal type waterways or crowded marinas. Key engine controls are also replicated in the aft cockpit for simpler docking.



EFFICIENT RACE BRED SHAFT DRIVE

Smart, innovative, practical design lies at the heart of the Maritimo philosophy. Big ideas - like a low angle race bred shaft drive and our super strong hand laid hull with patented bonding technology ensures best in class efficiency and excellent sea going abilities. Attention to detail - like perfectly located fuel gauges and creating a simple concise electrical panel layout that makes everyday boat management and long distance performance cruising straightforward and safe.



FULLY ENCLOSED FOUR SIDED FLYBRIDGE

More than an upper bridge, Maritimo's trademark enclosed flybridge gives an extra level of relaxed sophistication, space and luxury.







M70

OUR FLAGSHIP THAT PUTS THE OCEANS AT YOUR COMMAND

Our blue water flagship takes oceans in its stride, combining supreme performance and smart, timeless luxury in a four-cabin, eight-berth motor yacht with a potential high speed cruising range of up to 700 nautical miles.

**THIS IS A SERIOUS LUXURY MOTOR YACHT.
FITTED WITH TWIN 900 MHP (VOLVO) ENGINES
AS STANDARD, YOU CAN ISLAND HOP WITH
EASE MAINTAINING AVERAGE SPEEDS OF 21
KNOTS OR MORE OVER VAST DISTANCES.**

Maritimo's race bred shaft drive and hull design ensure the best fuel consumption in its class giving the M70 the ability to travel over 1020km (700 miles) between fuel stops.

While it makes big strides, it's the small details that will impress during long stays on board. Luxurious finishes include a full beam ensuite and split-level master stateroom with a king size bed and the option of double domestic sized fridges in the beautifully appointed galley.

Outside, enjoy the wide walk around decks and bi-fold doors that double the size of your "at anchor" or "cruising" living areas. The smart use of space flows inside with a fully configured aft galley featuring Miele appliances. An internal staircase leading up to the fully enclosed saloon sized flybridge - effectively gives you an apartment-like two storey entertaining and living area.







CUSTOMISE YOUR LUXURY ISLAND HOME WITH A RANGE OF OPTIONS INCLUDING CONVERTIBLE BERTHS, RELOCATABLE TABLES, A WET BAR AND TWO TRANSOM CONFIGURATIONS - EURO STYLE OR SPORTS FISHING. THE CHOICE IS YOURS.

M70 SPECIFICATIONS

LENGTH OVERALL	21.51 M	70' 7" FT
HULL LENGTH ISO	21.21 M	69' 7" FT
BEAM	5.72 M	18' 9" FT
DRAFT	1.5 M	4' 11" FT
DRY WEIGHT	43,000 KG	94,800 LBS
FUEL CAPACITY	6,300 L	1,664 US GAL
WATER CAPACITY	1,400 L	370 US GAL
HOLDING TANK CAPACITY	400 L	105 US GAL
SLEEPING CABINS	4 STANDARD	
SLEEPING CAPACITY	8 STANDARD	
ENGINES (STANDARD)	2 x VOLVO D13 - 1000 MHP - ZF	
GENERATOR	CUMMINS - ONAN 22 kW 60Hz	







M64

REFINED POWER IS THE ULTIMATE LUXURY

The Maritimo M64 cruising motor yacht is a highly impressive boat. With virtually everything that the M70 delivers the shorter length simply means you no longer need to compromise on luxury and long-range performance if you have tighter berthing requirements.

**THE M64 IS THE PERFECT EXAMPLE OF WHERE
INNOVATIVE ENGINEERING AND DESIGN EFFICIENCY
COMBINE TO DELIVER THE ULTIMATE PERFORMER.**

In line with Maritimo's grand design ambitions, the on board living is 'large'. Enjoy the same feeling of apartment sized interior space found in the M70, with a full beam master suite including king size bed and generous ensuite, fully enclosed flybridge, walk around decks, bi-fold doors and enclosed stairway between the bridge and lounge. The M64 provides spacious dual level luxury and numerous entertaining options for the ultimate in relaxed easy going yachting.

Powered by a pair of Volvo D13 900 MHP engines, it places 1800 MHP at your disposal whilst Maritimo's race proven shaft drive and hull design technology ensures superior fuel consumption for long range high speed blue water cruising.

A range of flexible configurations are offered to suit your requirements. Choose a three cabin, three bathroom configuration - ideal for giving teenage children or guests their own space - or four cabins and two bathrooms. Outside, choose from either our popular euro style or sports fishing transoms.







IN KEEPING WITH ALL MARITIMO MOTORYACHTS, YOUR PERSONAL TASTE CAN BE ACCOMMODATED INTO THE FINISHED LAYOUT INCLUDING A CHOICE OF HAND CRAFTED TIMBER DETAILING, CONVERTIBLE BERTHS, RELOCATABLE TABLES AND A WET BAR.

M64 SPECIFICATIONS

LENGTH OVERALL	19.51 M	64' FT
HULL LENGTH ISO	19.11 M	62' 9" FT
BEAM	5.72 M	18' 9" FT
DRAFT	1.415 M	4' 8" FT
DRY WEIGHT	39,000 KG	86,000 LBS
FUEL CAPACITY	5,600 L	1,479 US GAL
WATER CAPACITY	750 L	198 US GAL
HOLDING TANK CAPACITY	300 L	79 US GAL
SLEEPING CABINS	3 STANDARD	4 OPTIONAL
SLEEPING CAPACITY	6 STANDARD	8 OPTIONAL
ENGINES (STANDARD)	2 x VOLVO D13 - 900 MHP	
GENERATOR	CUMMINS - ONAN 21.5 kW 60HZ	







M59

SOPHISTICATED & MODERN WITH UNQUESTIONABLE DESIGN PEDIGREE

Refinement is at the heart of Maritimo and the Maritimo M59 is no exception. It's interior gives a sense of calm, indulgent and luxurious comfort while sporting a dynamic profile with a powerful and athletic stance.

A NEW DIMENSION IN SPACE, LUXURY AND ELEGANCE, WITH REFINED POWER AND PEERLESS CHARACTERISTICS. THE NEW WIDER BEAM ENSURES PLENTY OF INTERIOR SPACE - BEAUTIFULLY BALANCED, WITH OPTIMISED PROPORTIONS.

Step aboard where a calm sanctuary awaits, created through elegant simplicity and luxurious finishes. The three beautifully crafted cabins comfortably sleep six and include the full beam master stateroom - with makeup vanity or study - and a third cabin with side by side single beds that can be converted to a double. The versatility and clever use of space is highlighted with the addition of an optional fold out bed on the flybridge bringing the total guest accommodation to eight. Together with a beautifully appointed aft galley equipped with Miele appliances and large pantry, you'll want for nothing when entertaining or during long stays abroad.

Outside enjoy a large storage space at the back of the boat which is perfect for a tender and all the water toys you could want. The cockpit is accessed from both sides with openings to the hydraulic swim platform (optional) and because of the large beam the space is substantial.

Encompassing all its Maritimo lineage is known for, you will enjoy wide walk around decks, an internal staircase to fully enclosed flybridge, extended aft balcony and sun roof. Coupled with Maritimo's inherent strength and offshore capabilities, the Maritimo M59 will intuitively cut through the water in perfect motion.







MARITIMO'S RACE PROVEN SHAFT DRIVE TECHNOLOGY REDUCES FUEL CONSUMPTION AND GIVES THE PEACE OF MIND OF LOWER MAINTENANCE COSTS AND INCREASED LONGEVITY OF OWNERSHIP.

M59 SPECIFICATIONS

LENGTH OVERALL	18.07 M	59'3 FT
HULL LENGTH ISO	17.72 M	58'2 FT
BEAM	5.46 M	17' 11" FT
DRAFT	1.3 M	4'3 FT
DRY WEIGHT	29,000 KG	63,930 LBS
FUEL CAPACITY	4,500 L	1,188 US GAL
WATER CAPACITY	900 L	237 US GAL
HOLDING TANK CAPACITY	300 L	79 US GAL
SLEEPING CABINS	3 STANDARD	
SLEEPING CAPACITY	6 STANDARD	8 OPTIONAL
ENGINES (STANDARD)	2 x VOLVO D13 - 800 MHP TD	
GENERATOR	CUMMINS - ONAN 21.5 kW 60Hz	







M54

THE MOTORYACHT THAT REDEFINES LUXURY MOTOR CRUISING

Few, if any, boat builders can offer you a highly efficient straight shaft drive and a full beam master cabin in a 54 footer. That's why we've labelled the M54 as the boat that marries luxury and play without compromising either.

**ENJOY THE SAME HAND CRAFTED
LUXURY APARTMENT STYLE FEEL THAT
YOU FIND IN OUR LARGER FLAGSHIP
MODELS, BUT FOR A LOWER OUTLAY.**

Maritimo “design smarts” prove there’s no need to compromise. The M54 offers plenty of room to relax in style incorporating a full beam master with ensuite, featuring a mezzanine level with lockers, drawers, full-length mirror and vanity.

All the Maritimo hallmarks are aboard - fully enclosed air conditioned flybridge, wide walk around decks, enlarged cockpit with bi-fold doors, aft galley design with full-size fridge, well-appointed pantry and top quality Miele appliances.

When you’re not relaxing, entertain your guests with the M54’s sea going prowess. Our low angle straight drive delivers a very comfortable cruise attitude for long range fuel efficiency and a motor yacht that handles rough seas with remarkable assurity.







MARITIMO MARKS A BOLD EVOLUTION IN LONG RANGE MOTOR YACHT DESIGN, ADOPTING A DYNAMIC PROFILE ACROSS ITS M-SERIES RANGE WITH A POWERFUL AND STYLISH STANCE.

M54 SPECIFICATIONS

LENGTH OVERALL	17.23 M	56' 6" FT
HULL LENGTH ISO	16.84 M	55' 3" FT
BEAM	5.08 M	16' 8" FT
DRAFT	1.22 M	4' FT
DRY WEIGHT	22,000 KG	48,500 LBS
FUEL CAPACITY	3,800 L	1,003 US GAL
WATER CAPACITY	800 L	210 US GAL
HOLDING TANK CAPACITY	300 L	79 US GAL
SLEEPING CABINS	3 STANDARD	
SLEEPING CAPACITY	6 STANDARD	
ENGINES (STANDARD)	2 x VOLVO D11 - 670 MHP	
GENERATOR	CUMMINS - ONAN 21.5 kW 60Hz	







M51

THE COMPACT HIGH ACHIEVER

Our most compact flybridge motor cruiser, the Maritimo M51 demonstrates what can and should be done when you enter the world of luxury high performance motoryachts. We started with a clean sheet of paper, a keen sense of contemporary style and a maritime engineering pedigree honed from producing 175 kph offshore race boats to create this stunning motor yacht.

MARITIMO'S HULL DESIGN AND RACE-BRED DIRECT SHAFT DRIVE CREATE A BOAT WITH SUPERB BALANCE, POISE AND FUEL EFFICIENCY. A UNIQUE DESIGN APPROACH WHICH RESULTS IN A RUGGED YET EASY TO HANDLE 1340 HORSEPOWER POWERHOUSE PERFECTLY EQUIPPED TO INDULGE YOUR FAMILY AND GUESTS IN REMARKABLE AMOUNTS OF SPACE AND LUXURY.



Setting a new standard, the M51 features a stylish internal staircase leading to an enclosed flybridge, which can double as an upstairs living area with an optional fold out sofa. Featuring an impressive full beam master cabin and an innovative third cabin to starboard which you can option as a utility room.

Simple ideas that are often overlooked make all the difference. These Maritimo hallmarks include safe, wide, walk around decks for easy berthing and aft bi-fold doors to the rear cockpit, which together with a generously proportioned aft galley, amplify your living space and make relaxation a breeze.

In fact innovative use of space is the biggest Maritimo luxury of all. Ideas like the standard electrically operated lazarette hatch in the cockpit to ensure every area within the M51 is placed to good use.



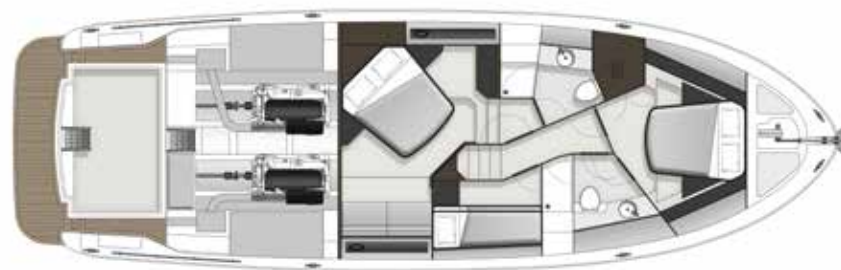




MARITIMO OFFERS YOU FLEXIBILITY AND CHOICE FOR ANY ADVENTURE INCLUDING OPTIONAL FISHING TRANSOM WITH LARGE FREEZER, UNDER FLOOR FISH BINS AND LIVE BAIT TANKS.

M51 SPECIFICATIONS

LENGTH OVERALL	16.19 M	53' 1" FT
HULL LENGTH ISO	15.92 M	52' 3" FT
BEAM	5.06 M	16' 7" FT
DRAFT	1.30 M	4' 3" FT
DRY WEIGHT	21,000 KG	46,300 LBS
FUEL CAPACITY	3,100 L	818 US GAL
WATER CAPACITY	500 L	132 US GAL
HOLDING TANK CAPACITY	200 L	53 US GAL
SLEEPING CABINS	3 STANDARD	
SLEEPING CAPACITY	5 STANDARD	7 OPTIONAL
ENGINES (STANDARD)	2 x VOLVO D11 - 670 MHP	
GENERATOR	CUMMINS - ONAN 13.5 kW 60Kz	





THE CHOICE IS YOURS

THE MARITIMO M-SERIES OFFERS YOU A RANGE OF GREAT OPTIONS AND FLEXIBILITY TO PERSONALISE YOUR MOTOR YACHT.

Maritimo make it easy through a logical series of steps to make your motor yacht a true expression of your individuality. You have a number of choices: from selecting your engines to exterior and interior colours, finishes and those detailed touches that define your character.



1

STEP 1 CHOOSE YOUR MODEL

Compare the standard features of each M-Series model and choose the one that best suits your lifestyle.

2

STEP 2 CHOOSE YOUR ENGINE

Most models offer a choice of powerful engines.

3

STEP 3 CHOOSE YOUR COLOUR

There's a wide range of possibilities for your hull colour to individualise your vessel.

4

STEP 4 CHOOSE YOUR INTERIOR

Personalise your own interior space from a carefully selected range of finishes and furnishings.

5

STEP 5 CHOOSE YOUR ACCESSORIES

Enhance your Maritimo further from our range of genuine accessories.

M-SERIES COMPARISON

	M70		M64		M59	
LENGTH OVERALL	21.51 M	70' 7" FT	19.51 M	64' FT	18.07 M	59'3 FT
HULL LENGTH ISO	21.21 M	69' 7" FT	19.11 M	62' 9" FT	17.72 M	58'2 FT
BEAM	5.72 M	18' 9" FT	5.72 M	18' 9" FT	5.46 M	17' 11" FT
DRAFT	1.5 M	4' 11" FT	1.415 M	4' 8" FT	1.3 M	4'3 FT
DRY WEIGHT	43,000 KG	94,800 LBS	39,000 KG	86,000 LBS	29,000 KG	63,930 LBS
FUEL CAPACITY	6,300 L	1,664 US GAL	5,600 L	1,479 US GAL	4,500 L	1,188 US GAL
WATER CAPACITY	1,400 L	370 US GAL	750 L	198 US GAL	900 L	237 US GAL
HOLDING TANK CAPACITY	400 L	105 US GAL	300 L	79 US GAL	300 L	79 US GAL
SLEEPING CABINS	4 STANDARD		3 STANDARD	4 OPTIONAL	3 STANDARD	
SLEEPING CAPACITY	8 STANDARD		6 STANDARD	8 OPTIONAL	6 STANDARD	8 OPTIONAL
ENGINES (STANDARD)	2 x VOLVO D13 - 1000 MHP - ZF		2 x VOLVO D13 - 900 MHP		2 x VOLVO D13 - 800 MHP TD	
GENERATOR	CUMMINS - ONAN 29 kW 60Hz		CUMMINS - ONAN 21.5 kW 60Hz		CUMMINS - ONAN 21.5 kW 60Hz	

M54

17.23 M	56' 6" FT
16.84 M	55' 3" FT
5.08 M	16' 8" FT
1.22 M	4' FT
22,000 KG	48,500 LBS
3,800 L	1,003 US GAL
800 L	210 US GAL
300 L	79 US GAL
3 STANDARD	
6 STANDARD	
2 x VOLVO D11 - 670 MHP	
CUMMINS - ONAN 21.5 kW 60Hz	

M51

16.19 M	53' 1" FT
15.92 M	52' 3" FT
5.06 M	16' 7" FT
1.30 M	4' 3" FT
21,000 KG	46,300 LBS
3,100 L	818 US GAL
500 L	132 US GAL
200 L	53 US GAL
3 STANDARD	
5 STANDARD 7 OPTIONAL	
2 x VOLVO D11 - 670 MHP	
CUMMINS - ONAN 13.5 kW 60Kz	



RACE BRED ENGINEERING

With a heritage in offshore racing, Maritimo provides world-class technology that excites all true boating enthusiasts with no compromise on luxury.

At 175mph, there is no such thing as over engineering. Intelligent weight distribution, light weight durable materials, precision components and full power steering creates smooth, exact and responsive performance.

Maritimo has been at the leading edge of offshore racing both in Australia and internationally and with these credentials no other manufacturer can match the technology and performance built into every Maritimo.





THE WORLD OF MARITIMO



MARITIMO MUSTERS & EVENTS

As a proud Maritimo owner, become part of our story at one of our Maritimo Musters held around the world. Meet new friends, speak to our team about how each and every model is built, while your driving skills are put to the test.

Extend beyond the pleasurable days out on the water with our range of exclusive benefits. From special VIP events across the world, the chance to be part of product development and 'experience days' with our brand partners, there's plenty to be involved in.



GLOBAL BOAT SHOWS

Experiencing a Maritimo has never been easier with our dedication to an international boat show schedule across Australia, the Americas and Europe. This is an opportunity for you to be informed and entertained on Maritimo's latest models. Visit our website and social channels to find a boat show near you.
maritimo.com.au

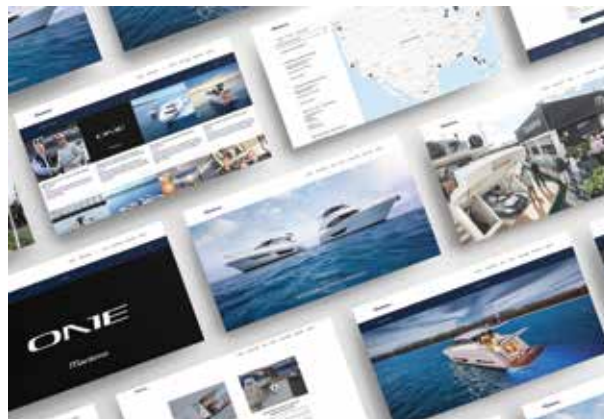


MARITIMO COLLECTION

Your motor yacht is just the beginning. The latest Maritimo Collection is now available for you to discover.

Meticulous attention to detail doesn't stop with our motoryachts. You'll find the same level of craftsmanship in our clothing. Partnering with Henri Lloyd, we have produced a range of premium clothing that is not only stylish but practical. So whether you're shopping for yourself or a loved one, you know the quality is assured.

The Maritimo Collection includes ladies and gents clothing as well as a range of bags and accessories. Visit our online shop at shop.maritimo.com.au.



CONNECT WITH MARITIMO

Maritimo's digital world offers you the opportunity to connect with us. Our website, Facebook, Instagram, Twitter, LinkedIn and YouTube channels are filled with the latest Maritimo news, events and models, plus insights into the factory and offshore racing.

maritimo.com.au | [@maritimooftshore](https://www.instagram.com/maritimooftshore)



DISCLAIMER

Maritimo (MFG) International Pty Ltd is constantly seeking ways to improve the specifications, designs and production of its motoryachts and enhancements take place continually. Whilst every effort is made to ensure up to date literature, this brochure should not be regarded as an infallible guide to current specifications.

Always check with your authorised Maritimo consultant to ensure you have the latest specifications, options and pricing. We reserve the right to change specifications, fittings, inventory and prices without notice.

© Copyright August 2019
Maritimo (MFG) International Pty Ltd

Maritimo®